

CA6 ND3

Compact 2 x 6" Array system

2 x 6NTLW2000 + ND3T on XG14



CA6 ND3 | SPEAKERS

SPECIFICATIONS

Nominal Impedance	16 Ω
Minimum Impedance	9.7 Ω
Nominal Power Handling ¹	320 W
Continuous Power Handling ²	600 W
Sensitivity ³	93.0 dB
Frequency Range	100 - 7300 Hz
Voice Coil Diameter	51 mm (2.01 in)
Winding Material	aluminum
Winding Depth	16.0 mm (0.63 in)
Magnetic Gap Depth	8.5 mm (0.33 in)

PARAMETERS⁴

Resonance Frequency	86 Hz
Re	9.0 Ω
Qes	0.43
Qms	3.38
Qts	0.38
Vas	4.8 dm ³ (0.17 ft ³)
Sd	133.0 cm ² (20.62 in ²)
η _o	0.7 %
Xmax	5.9 mm
Xvar	7.5 mm
Mms	17.5 g
BL	14.1 Txm
Le	0.34 mH
EBP	200 Hz

KEY FEATURES

- Dual Gap ultra linear motor
- 320W AES power handling
- 51 mm (2 in) voice coil
- Extremely balanced BL shape for maximum SPL
- Optimized thermal conductivity
- Maximum linearity and inductance symmetry for extended mid-band clarity
- Ideal for super light line array applications

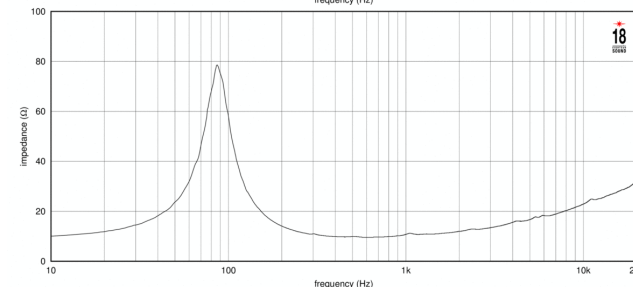
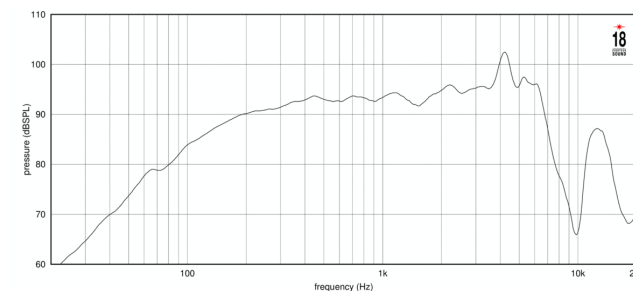
DESIGN

Surround Shape	M-roll
Cone Shape	Curvilinear
Magnet Material	Neo
Woofer Cone Treatment	Weather protected
Recommended Enclosure	5.0 dm ³ (0.18 ft ³)
Recommended Tuning	85 Hz

MOUNTING AND SHIPPING INFO

Overall Diameter	162 mm (6.38 in)
Bolt Circle Diameter	170 mm (6.69 in)
Baffle Cutout Diameter	148.0 mm (5.83 in)
Depth	108 mm (4.25 in)
Flange and Gasket Thickness	14 mm (0.55 in)
Net Weight	1.2 kg (2.65 lb)
Shipping Weight	1.5 kg (3.31 lb)
Shipping Box	185x170x85 mm (7.28x6.69x3.35 in)

6NTLW2000 16Ω



1. 2 hours test made with continuous pink noise signal within the range Fs-10Fs. Power calculated on rated minimum impedance. Loudspeaker in free air.
 2. Power on Continuous Program is defined as 3 dB greater than the Nominal rating.
 3. Applied RMS Voltage is set to 2.83 V for 8 ohms Nominal Impedance.
 4. Thiele-Small parameters are measured after a high level 20 Hz sine wave preconditioning test.



CA6 ND3 | SPEAKERS

SPECIFICATIONS

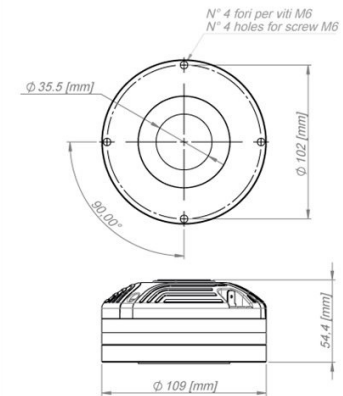
Throat Diameter	36 mm (1.4 in)
Nominal Impedance	8 Ω
Minimum Impedance	6.4 Ω
Nominal Power Handling ¹	110 W
Continuous Power Handling ²	220 W
Sensitivity ³	112.0 dB
Frequency Range	0.8 - 20.0 kHz
Recommended Crossover ⁴	1.2 kHz
Voice Coil Diameter	75 mm (3.0 in)
Winding Material	Aluminum
Diaphragm Material	Titanium
Flux Density	2.0 T
Magnet Material	Neodymium

KEY FEATURES

- Ultra compact design (OD 109mm - 4.3 in)
- 112 dB SPL 1W-1m average sensitivity
- 1.4 inch exit throat
- 220W maximum program power handling
- Natural Sound frequency response extended up to 20 kHz
- Next-gen 4-slot metal alloy phase plug
- Edge-wound 75mm (3 in) CCAW voice coil
- Titanium diaphragm assembly
- Neodymium ring magnetic structure
- Copper ring for reduced distortion and increased output
- Self-centering d-kit for accurate and fast service

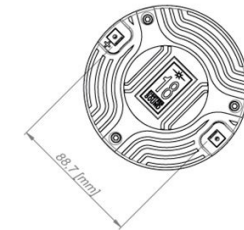
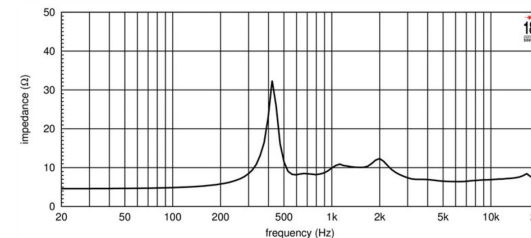
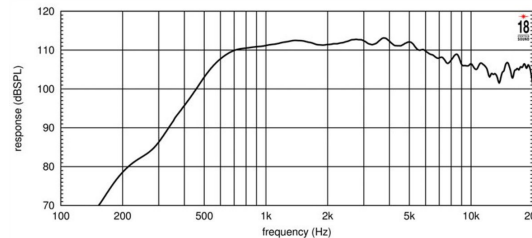


ND3T 8Ω



MOUNTING AND SHIPPING INFO

Overall Diameter	310 mm (12.2 in)
Bolt Circle Diameter	295 mm (11.61 in)
Baffle Cutout Diameter	282.0 mm (11.1 in)
Depth	193 mm (7.6 in)
Flange and Gasket Thickness	13 mm (0.53 in)
Net Weight	4.7 kg (10.36 lb)
Shipping Weight	5.5 kg (12.13 lb)



1. 2 hour test made with continuous pink noise signal within the range from the recommended crossover frequency to 20 kHz.. Power calculated on rated nominal impedance.
 2. Power on Continuous Program is defined as 3 dB greater than the Nominal rating.
 3. Applied RMS Voltage is set to 2.83 V for 8 ohms Nominal Impedance.
 4. 12 dB/oct. or higher slope high-pass filter.



CA6 ND3 | HORN

XG14

KEY FEATURES

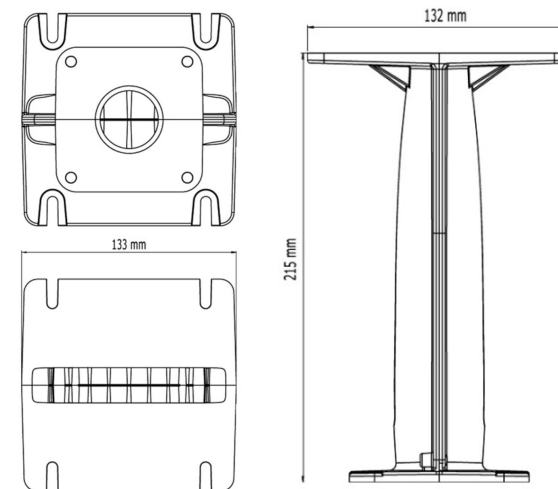
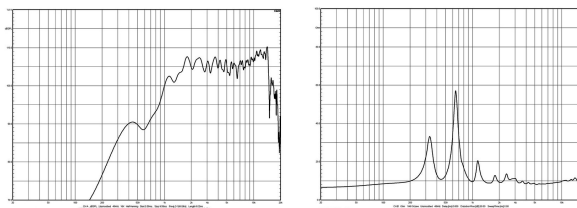
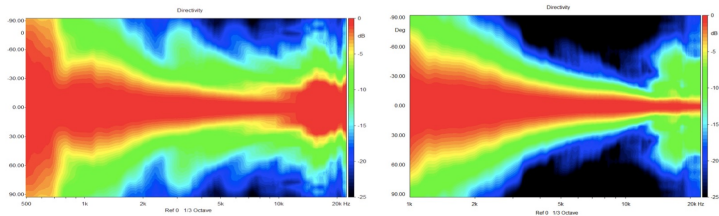
- 1.4" entry line-array source
- 10° vertical coverage angle
- Transmission line acoustical design minimizes internal reflections and acoustical losses
- Throat shape optimized for lowering air distortion
- Compact size for high arrayability
- Diecast aluminum construction

SPECIFICATIONS

Throat Diameter	35,5 mm (1,4 in)
Horizontal Coverage (-6dB)	120° Max
Vertical Coverage (-6 dB)	10°
Usable Frequency Range	Above 800 Hz
Waveguide Material	Die-cast Aluminum
Sensitivity ²	111.0 dB
Frequency Range ³	500.0 - 18.0 kHz

MOUNTING AND SHIPPING INFO

Flange Height	126 mm (5 in)
Mouth Width	133 mm (5.25 in)
Depth	215 mm (8.45 in)
Flange Mounting	4 screws \varnothing 6
Gross weight	1,3 Kg (2.73 lb)
Net weight	1 kg (2.10 lb)





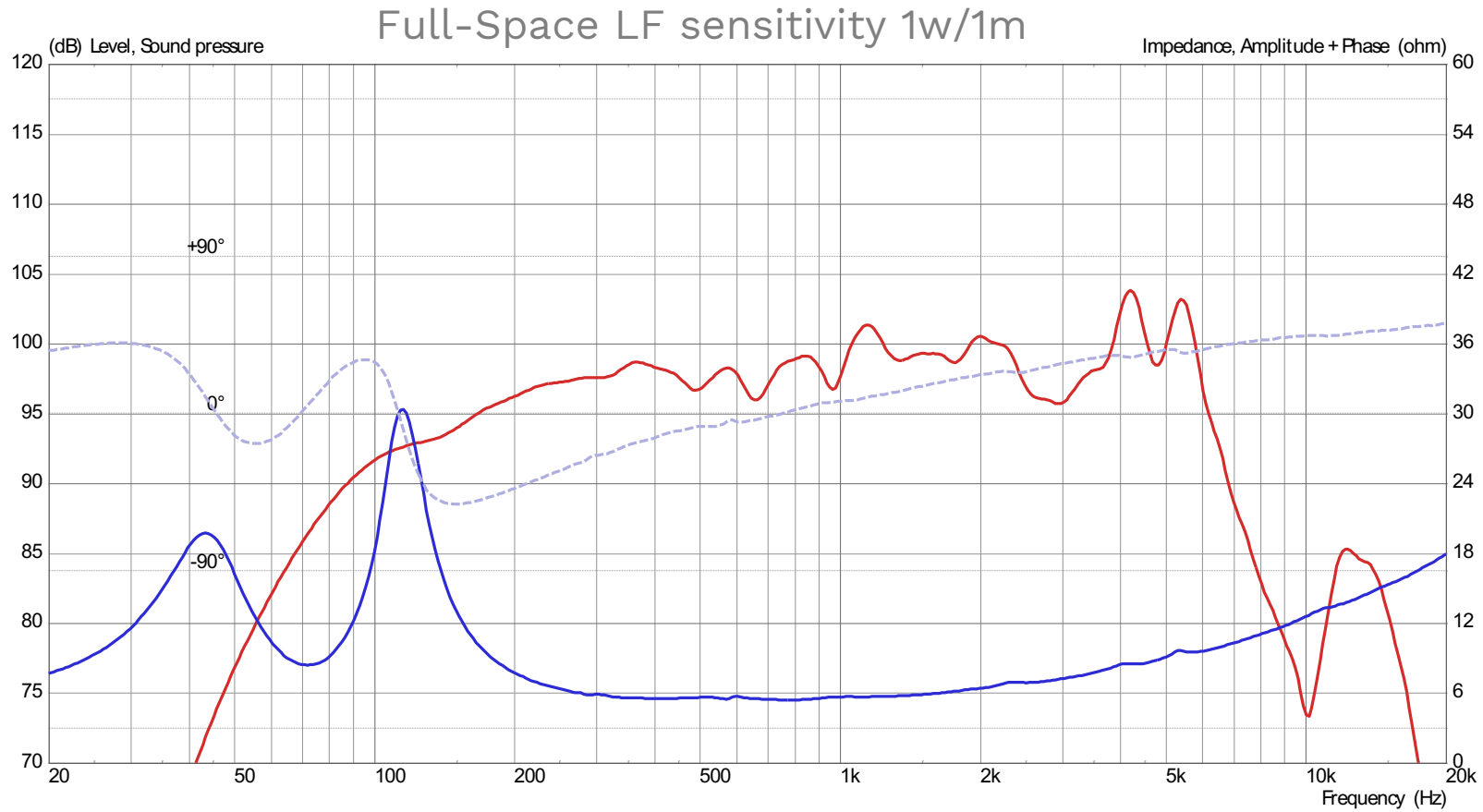
CA6 ND3 | BILL OF MATERIALS

- 2x 6NTLW2000 – 16 ohm
- 1x ND3T – 8 ohm
- 1x XG14
- 28x M4 Wood T-Nuts
- 4x M5 Wood T-Nuts
- 8x M4 Hex socket head ISO 4762
- 20x M4 Hex socket CTSK head ISO 10642
- 4x M5 Hex socket head ISO 4762 with washer and grower
- 2x Neutrik NL4MP
- Edilfiber damping material 30mm - 30kg/m³



CA6 ND3 | MEASUREMENTS

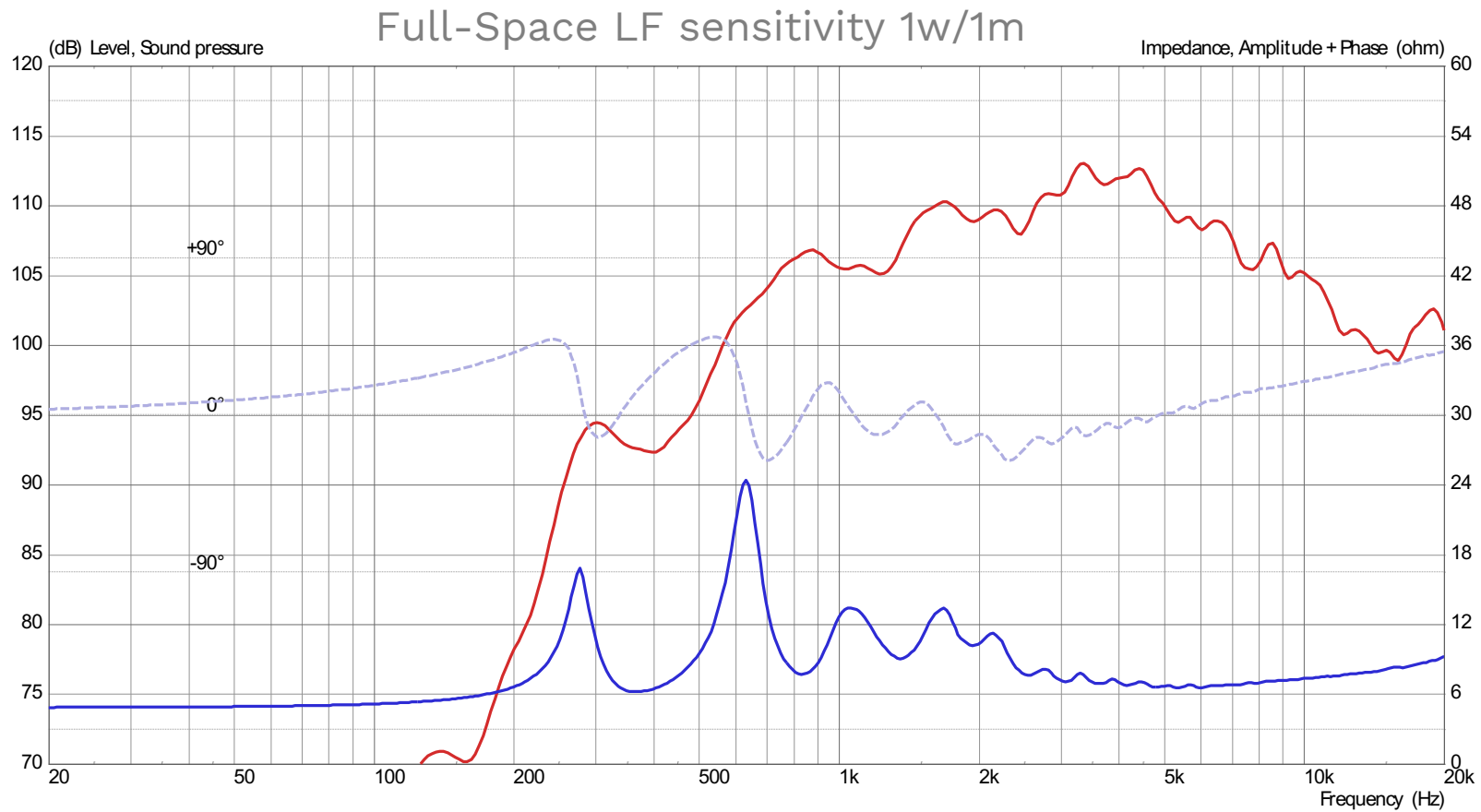
Frequency response & Impedance response





CA6 ND3 | MEASUREMENTS

Frequency response & Impedance response

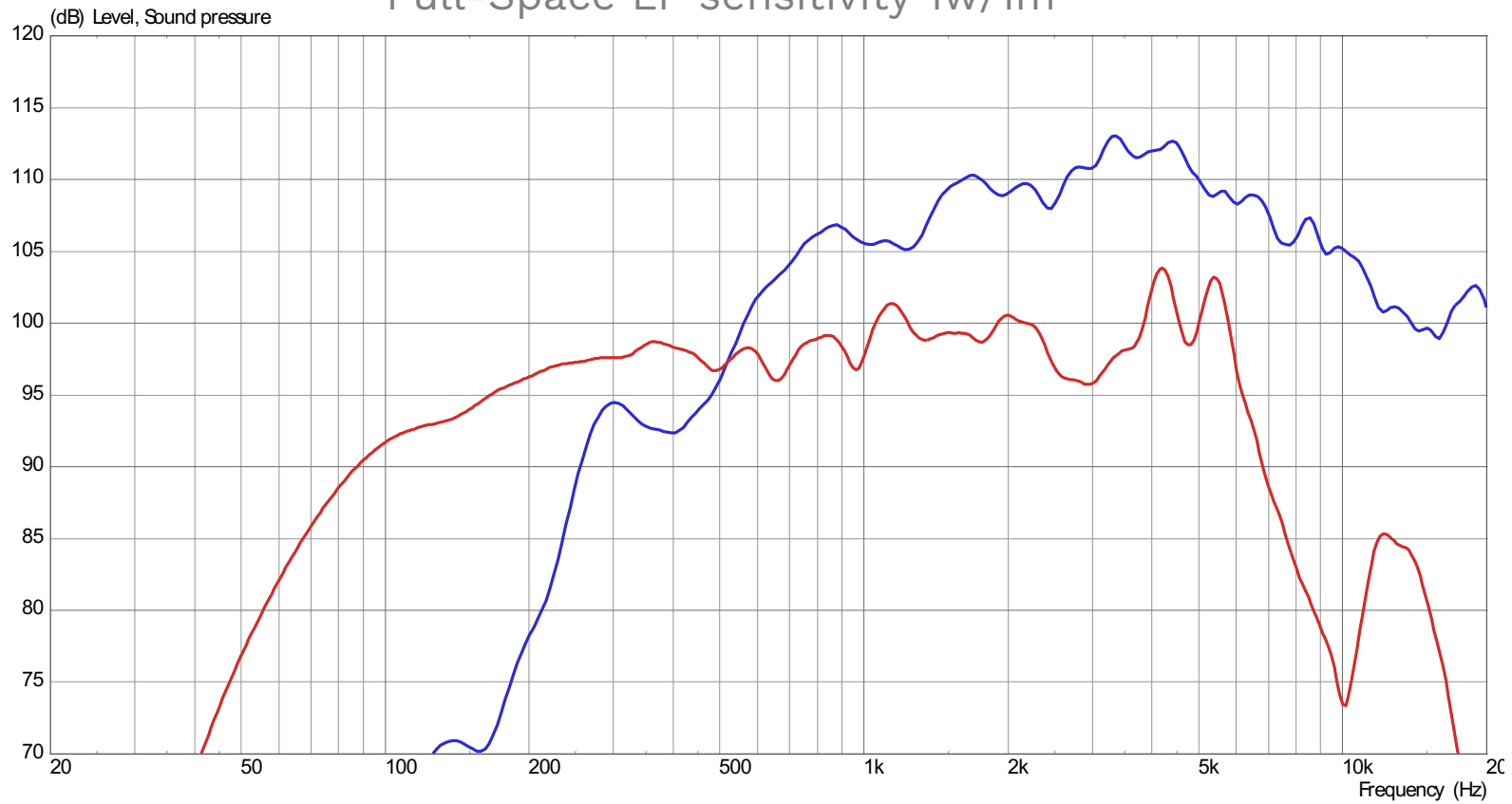




CA6 ND3 | MEASUREMENTS

Frequency response

Full-Space LF sensitivity 1w/1m

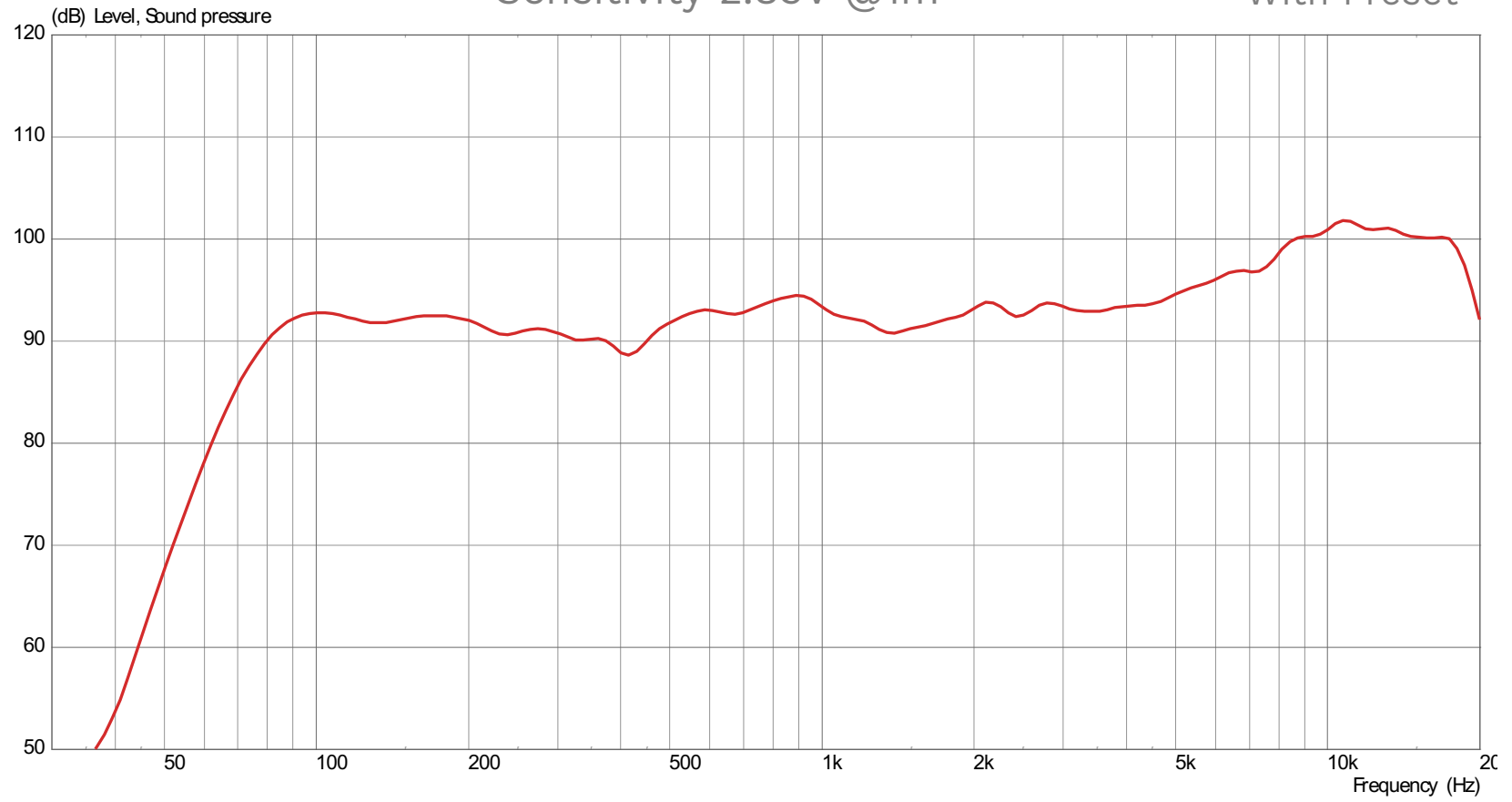




CA6 ND3 | MEASUREMENTS

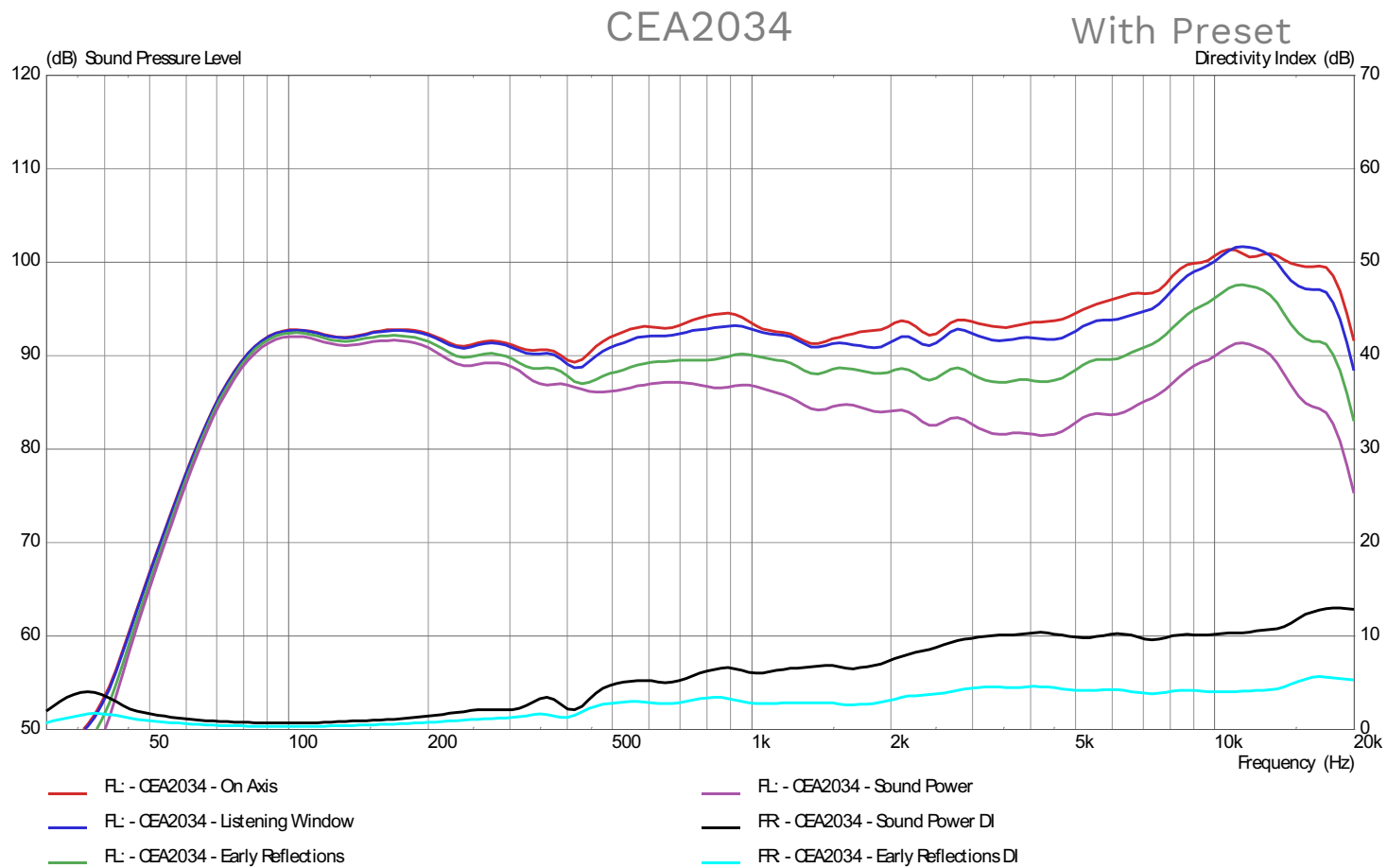
Sensitivity 2.83V @1m

With Preset





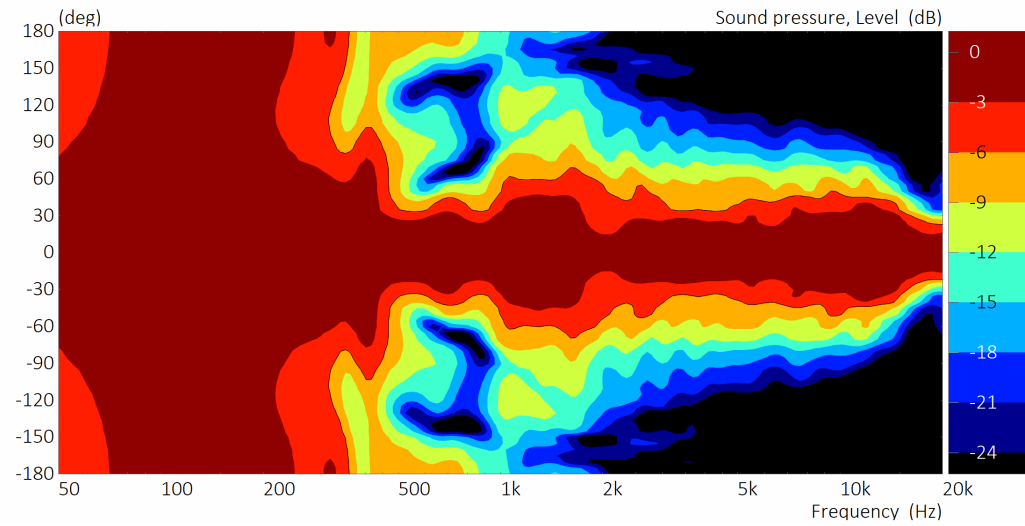
CA6 ND3 | MEASUREMENTS



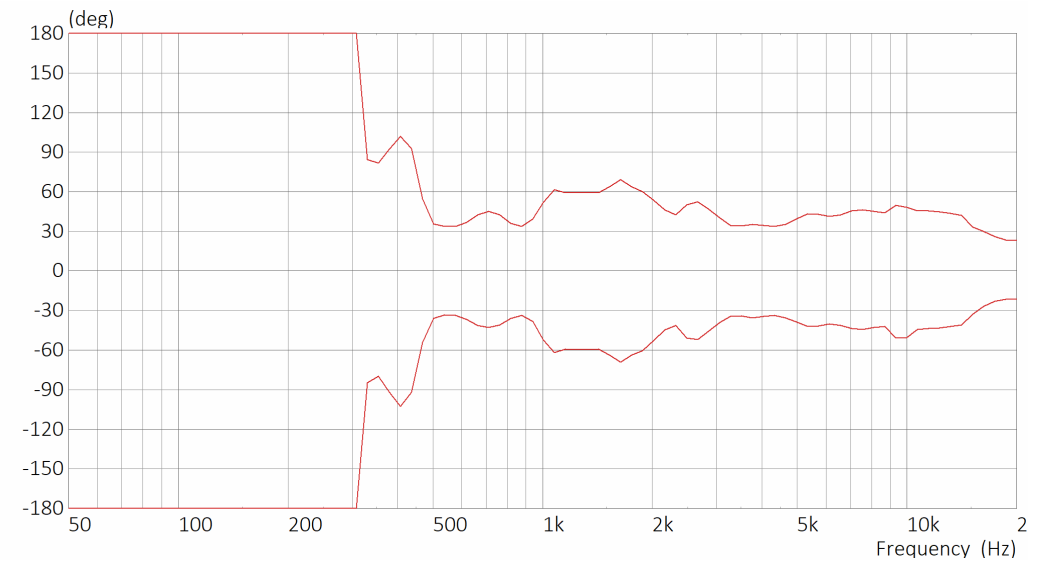


CA6 ND3 | MEASUREMENTS

Horizontal Contour



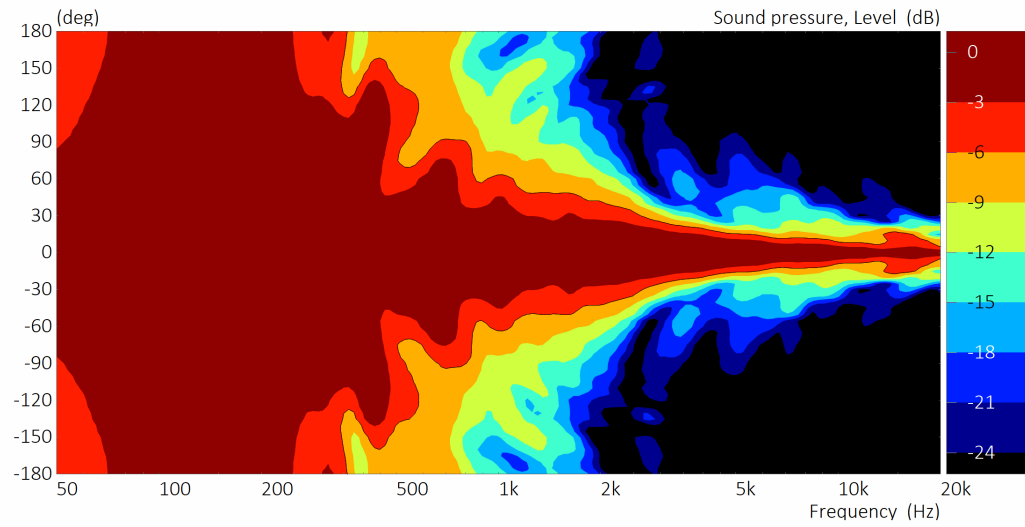
With Preset



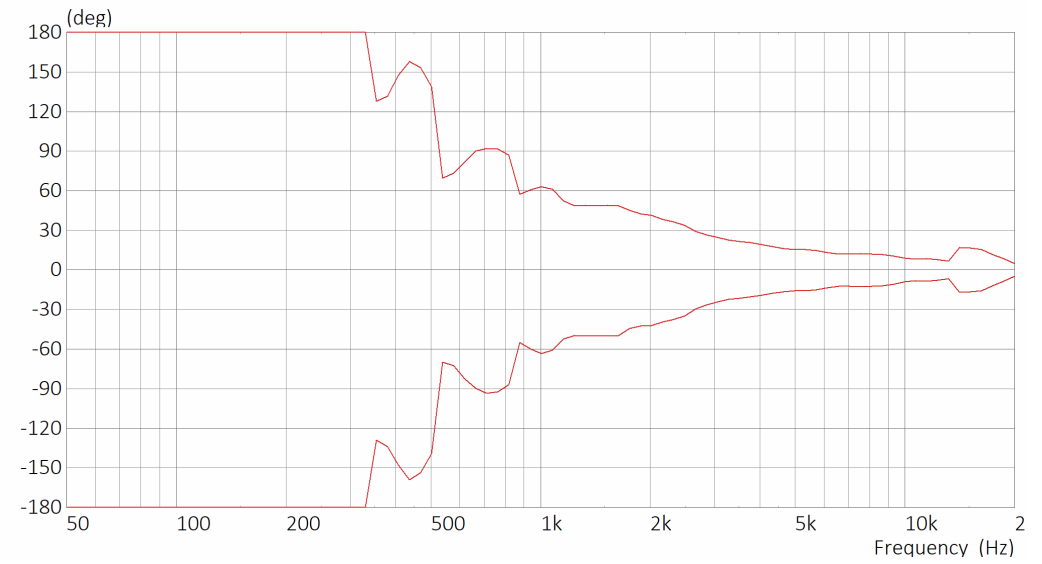


CA6 ND3 | MEASUREMENTS

Vertical Contour



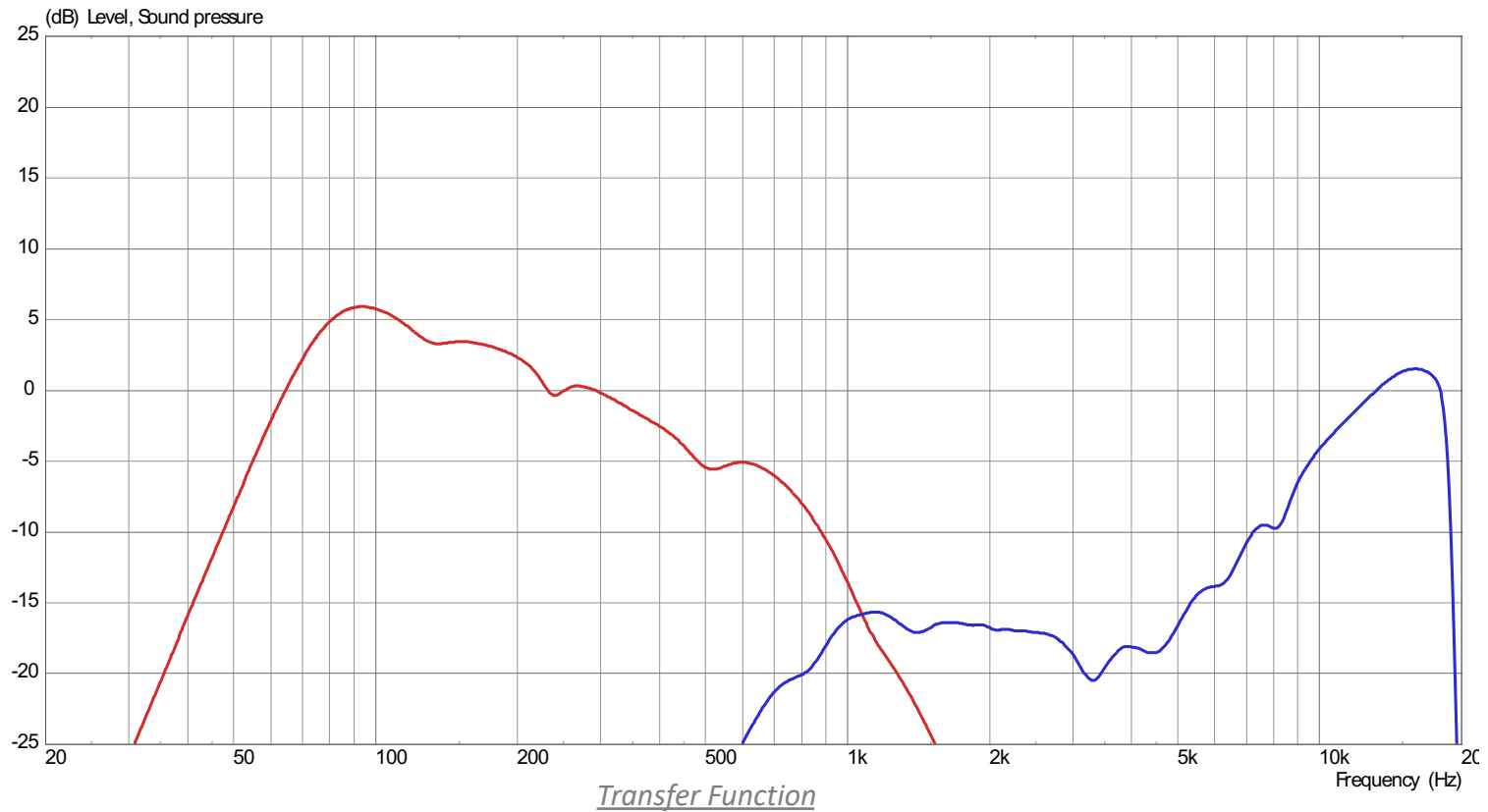
With Preset





CA6 ND3 | PROCESSING

LF & HF





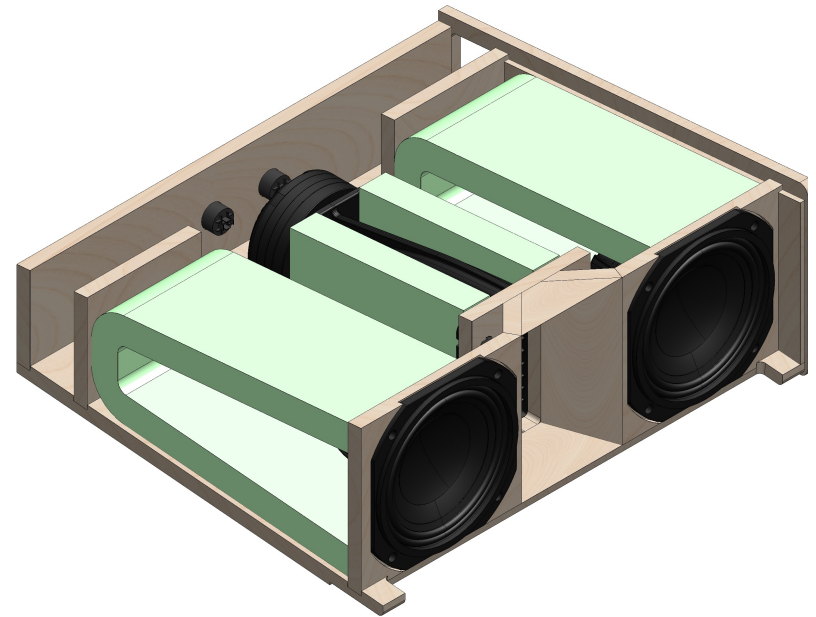
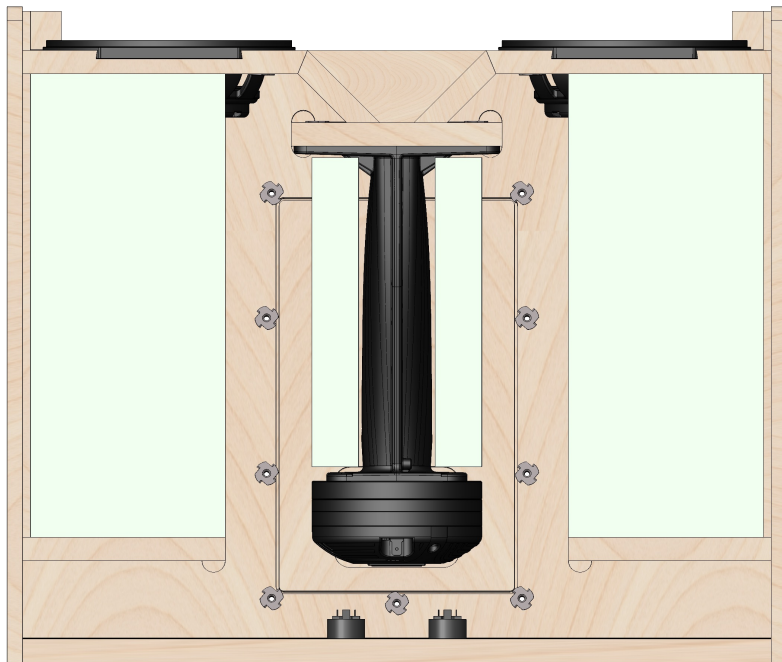
CA6 ND3

Assembly Information



CA6 ND3 | DAMPING MATERIAL

Edilfiber (Polyester) 30kg/m³ – 30mm thick

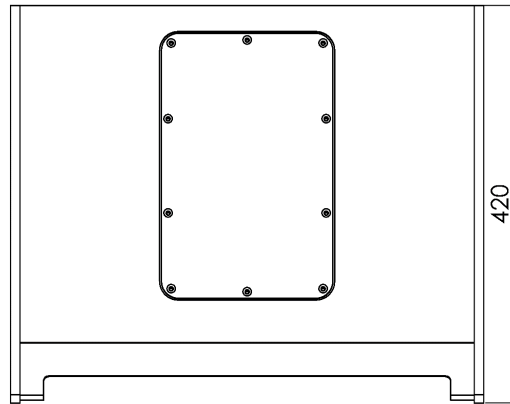
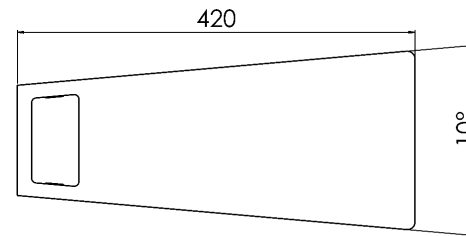
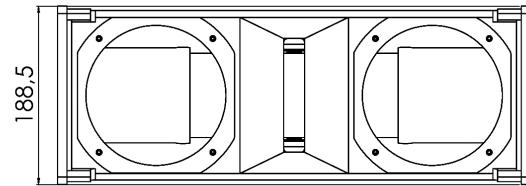


Follow carefully the quantity and positioning



CA6 ND3 | DIMENSIONS

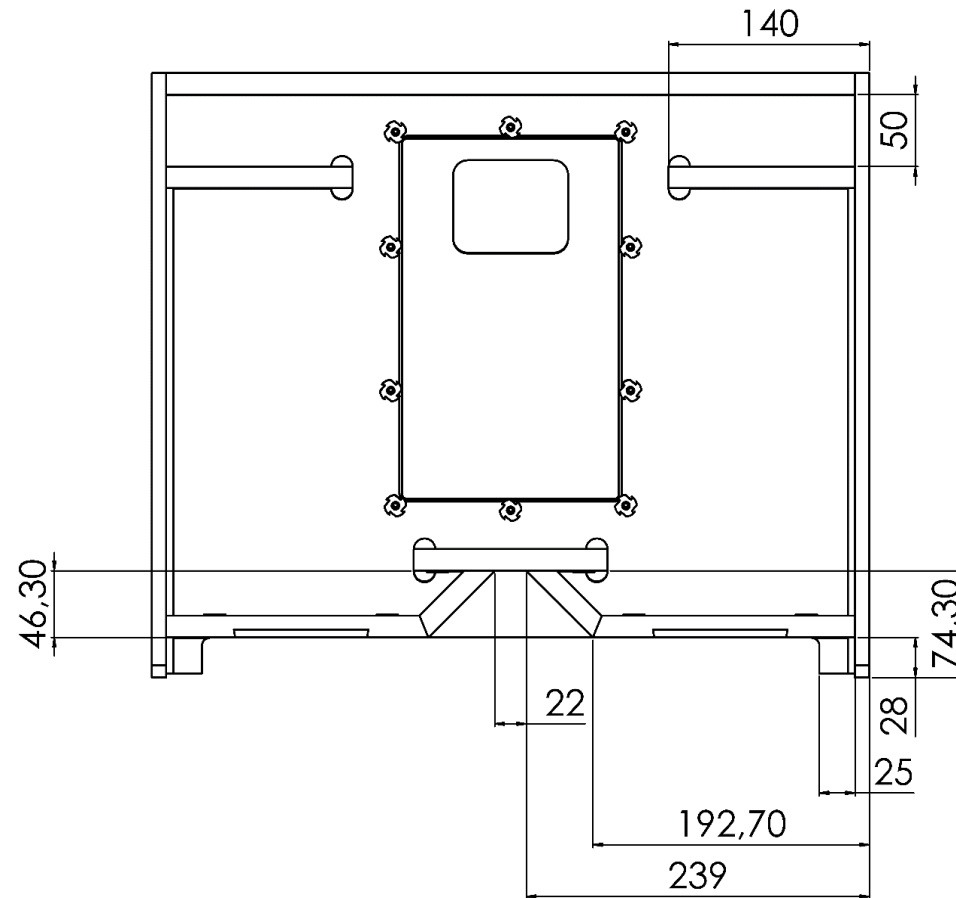
Total dimensions





CA6 ND3 | DIMENSIONS

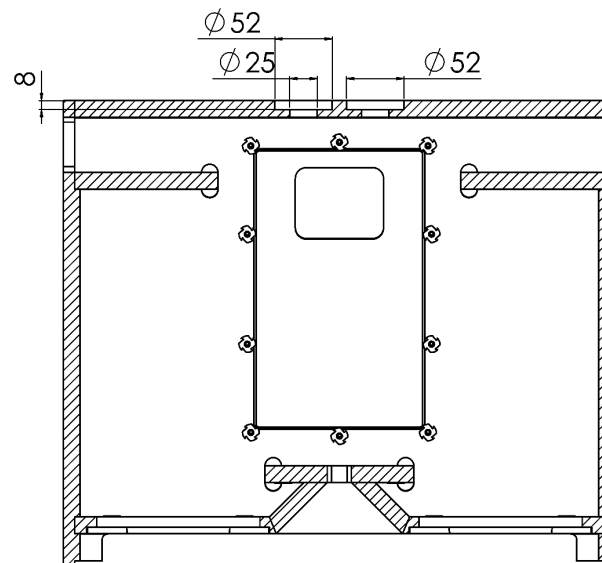
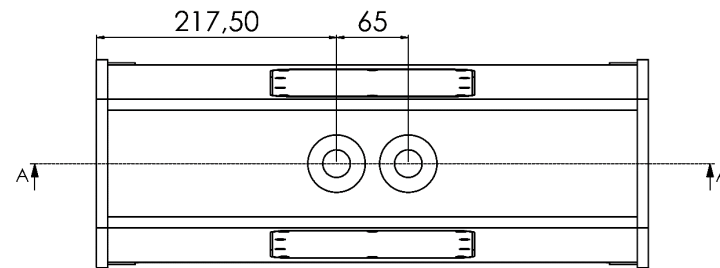
Top view





CA6 ND3 | DIMENSIONS

Back view

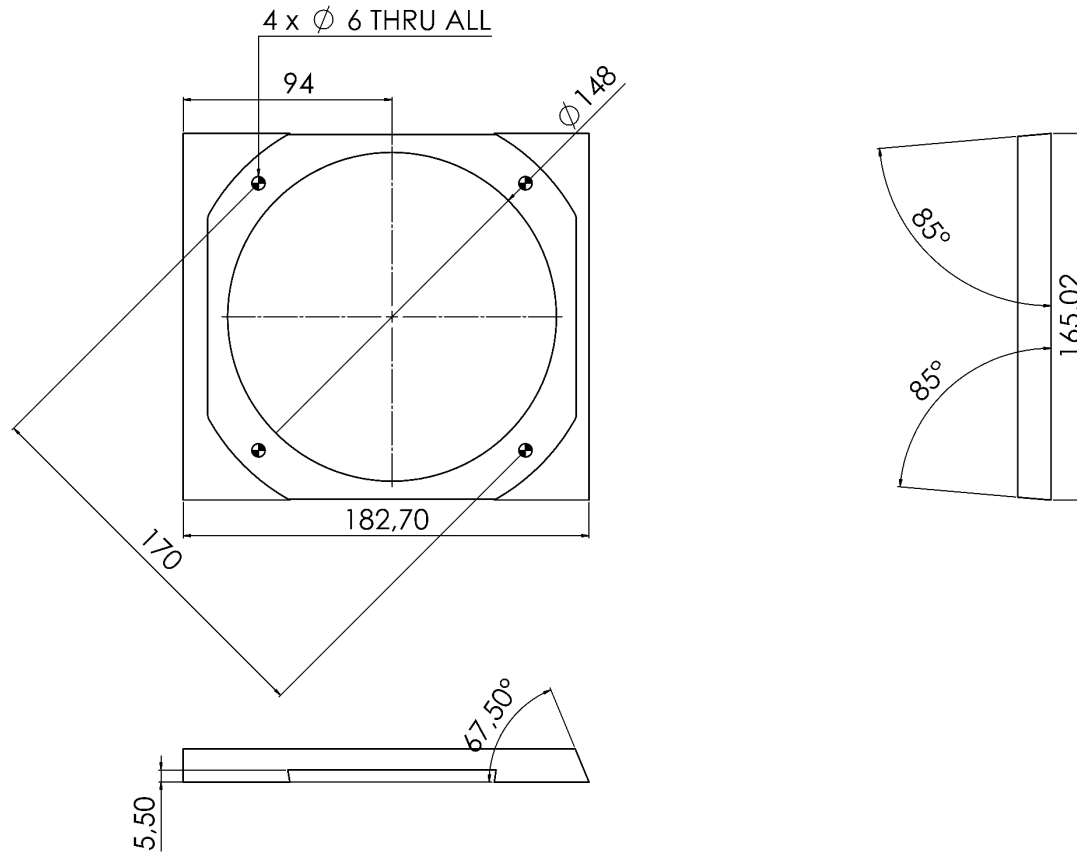


SECTION A-A



CA6 ND3 | DIMENSIONS

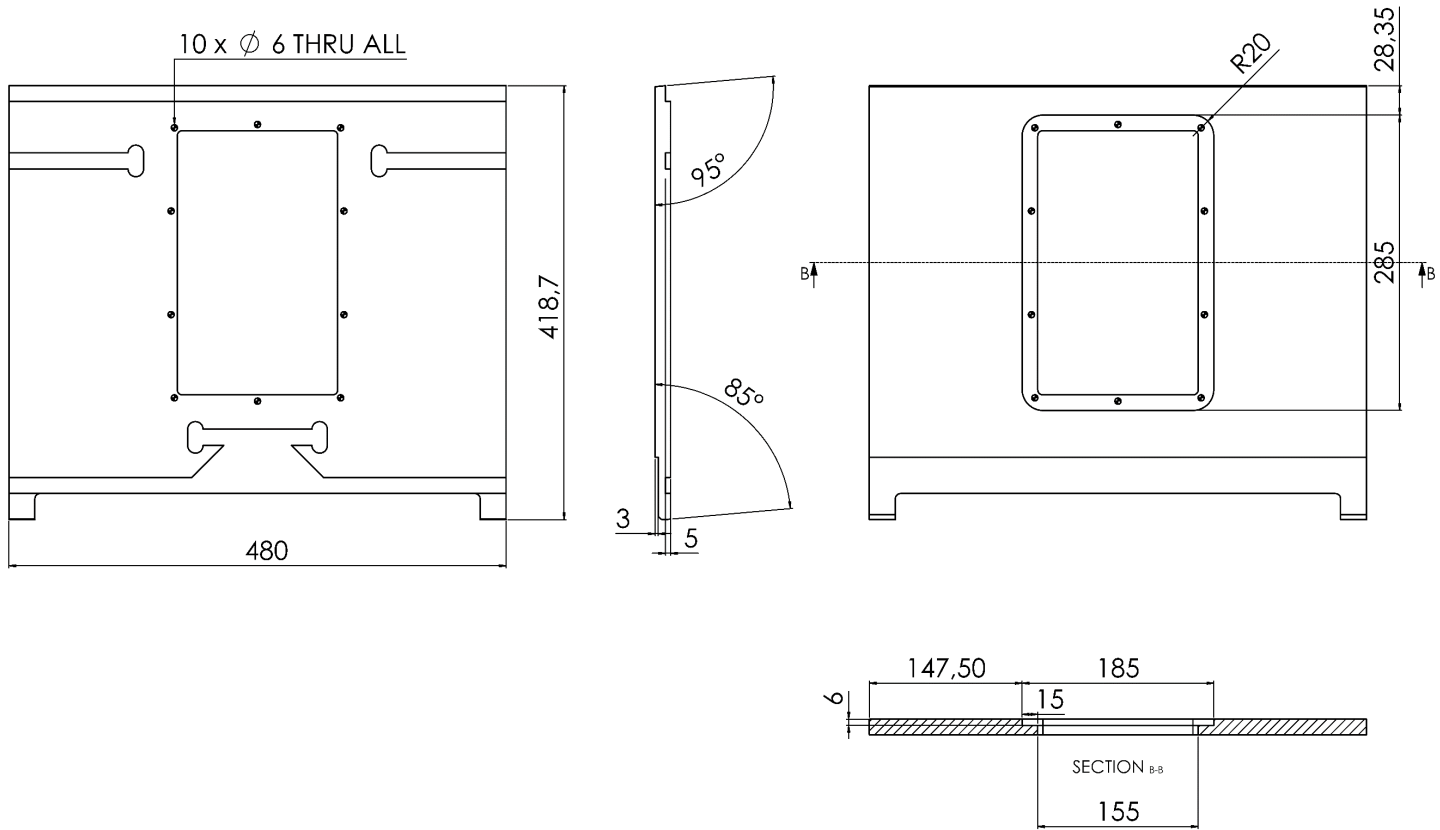
Baffle





CA6 ND3 | DIMENSIONS

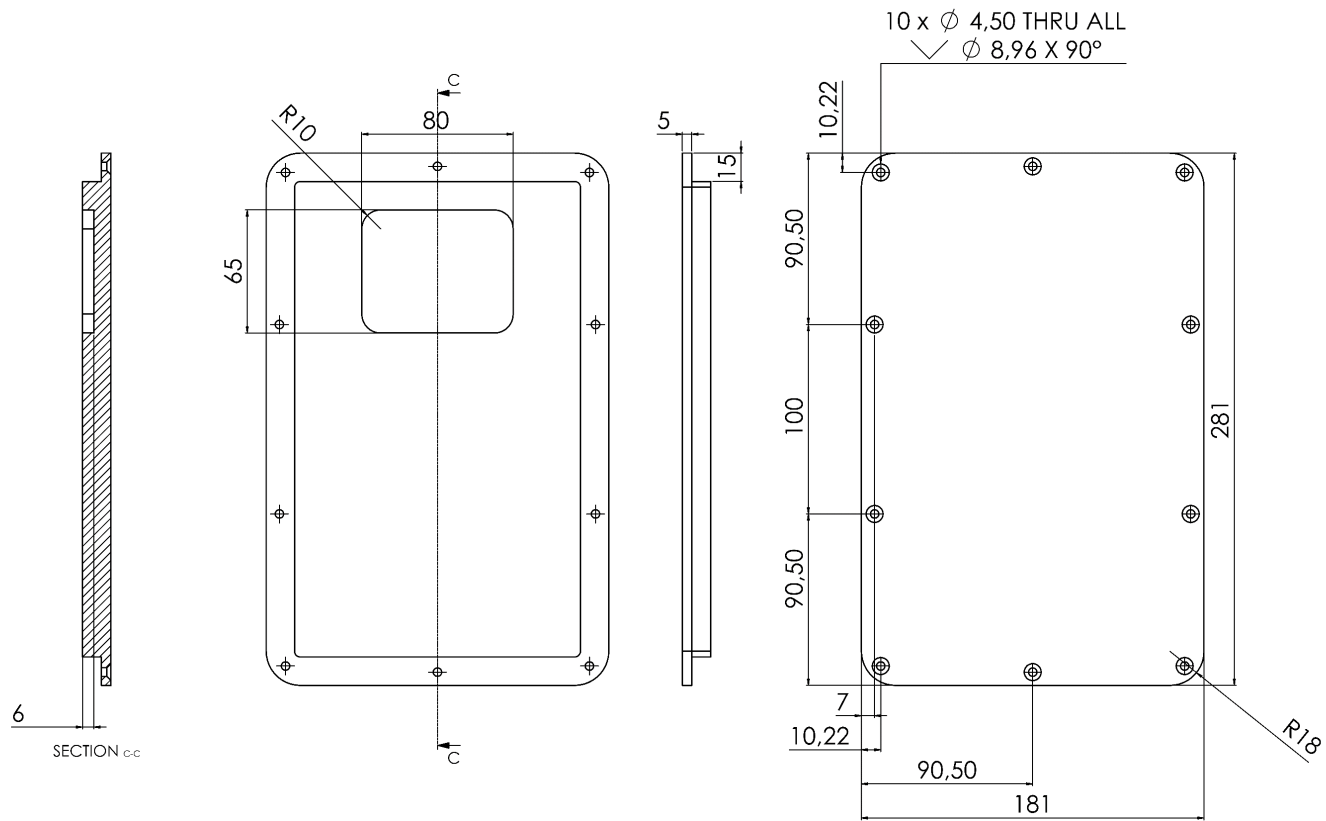
Top and Bottom panels





CA6 ND3 | DIMENSIONS

Access Panel





CA6 ND3 | NOTES