

CA8 AMT

Compact 2 x 8" Array system

2 x 8NTLW2000 + AMT200P



CA8 AMT | SPEAKERS

SPECIFICATIONS

Nominal Impedance	8 Ω
Minimum Impedance	5.8 Ω
Nominal Power Handling ¹	350 W
Continuous Power Handling ²	700 W
Sensitivity ³	97.5 dB
Frequency Range	70 - 4500 Hz
Voice Coil Diameter	51 mm (2.0 in)
Winding Material	aluminum
Winding Depth	13.0 mm (0.51 in)
Magnetic Gap Depth	8.5 mm (0.33 in)

PARAMETERS⁴

Resonance Frequency	71 Hz
Re	5.2 Ω
Qes	0.21
Qms	8.1
Qts	0.21
Vas	13.0 dm ³ (0.46 ft ³)
Sd	227.0 cm ² (35.19 in ²)
η _o	2.2 %
Xmax	4.4 mm
Xvar	5.0 mm
Mms	28.0 g
Bl	17.5 Txm
Le	0.63 mH
EBP	338 Hz

KEY FEATURES

- Dual Gap ultra linear motor
- 350W AES power handling
- 51 mm (2 in) CCAW voice coil
- Extremely balanced BL shape for maximum SPL
- Optimized thermal conductivity
- Maximum linearity and inductance symmetry for extended mid-band clarity
- Ideal for super light line array applications

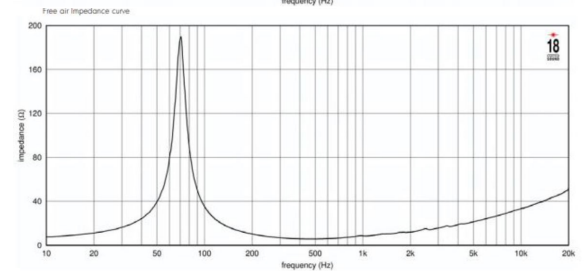
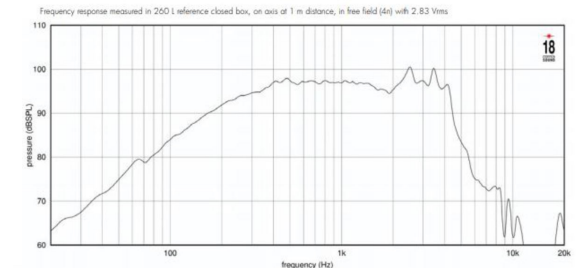
DESIGN

Surround Shape	Double roll
Cone Shape	Curvilinear
Woofer Cone Treatment	Water,UV repellent
Recommended Enclosure	15.0 dm ³ (0.53 ft ³)
Recommended Tuning	100 Hz

MOUNTING AND SHIPPING INFO

Overall Diameter	210 mm (8.27 in)
Bolt Circle Diameter	196 mm (7.74 in)
Baffle Cutout Diameter	186.0 mm (7.32 in)
Depth	121 mm (4.76 in)
Flange and Gasket Thickness	9 mm (0.35 in)
Net Weight	1.5 kg (3.31 lb)
Shipping Weight	1.9 kg (4.19 lb)

8NTLW2000 8Ω



1. 2 hours test made with continuous pink noise signal within the range Fs-10Fs. Power calculated on rated minimum impedance. Loudspeaker in free air.
2. Power on Continuous Program is defined as 3 dB greater than the Nominal rating.
3. Applied RMS Voltage is set to 2.83 V for 8 ohms Nominal Impedance.
4. Thiele-Small parameters are measured after a high level 20 Hz sine wave preconditioning test.



CA8 AMT | SPEAKERS

SPECIFICATIONS

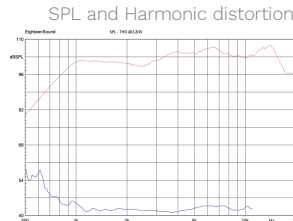
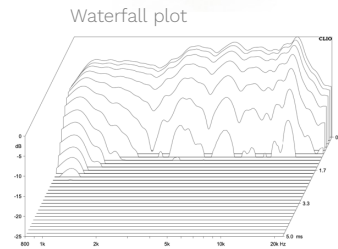
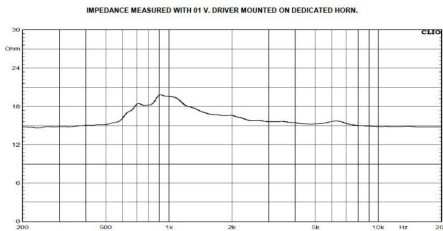
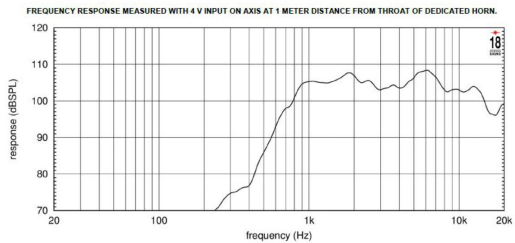
Nominal Impedance	16 Ω
Minimum Impedance	14.7 Ω
Nominal Power Handling ¹	60 W
Continuous Power Handling ²	120 W
Sensitivity ³	103.5 dB
Frequency Range	800 Hz - 18 kHz
Recommended Crossover ⁴	1.2 kHz
Flux Density	0.82 T

KEY FEATURES

- Planar Exit
- Super fast Transient response
- Extremely low harmonic distortion
- Dedicated Waveguide available
- Super accurate control directivity in vertical stacks.
- P.I. membrane

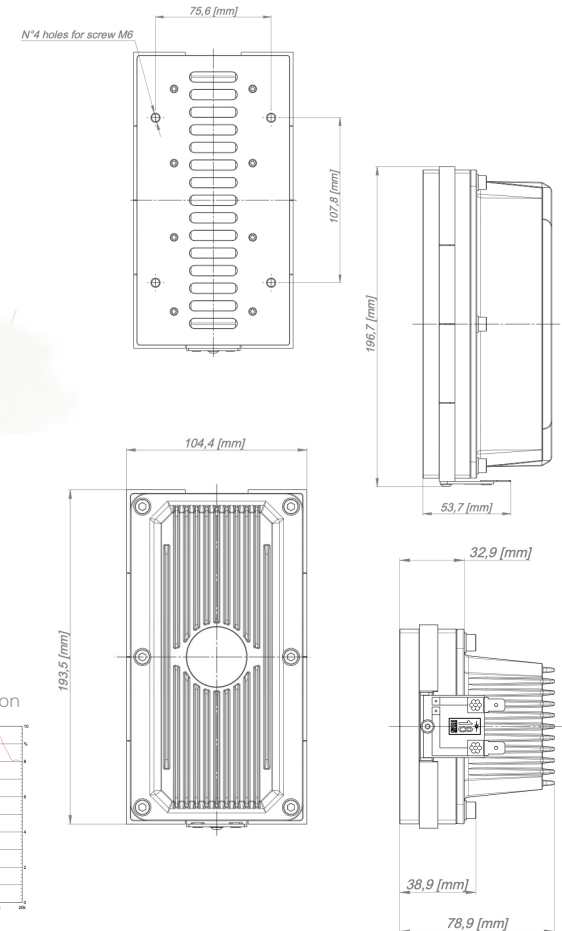
MOUNTING AND SHIPPING INFO

Overall rectangular throat dimension	167x31mm (6,57x1,22in)
Holes size	4x4xM6
Bolt circles geometry	174x86mm (6,85x3,38in)
Depth	81 mm (3.19 in)
Net Weight	3.4 kg (7.5 lb)
Shipping Box	165x150x65 mm (6.50x5.91x2.56 in)



1. 2 hour test made with continuous pink noise signal within the range from the recommended crossover frequency to 20 kHz. Power calculated on rated nominal impedance.
2. Power on Continuous Program is defined as 3 dB greater than the Nominal rating.
3. Applied RMS Voltage is set to 2.83 V for 8 ohms Nominal Impedance.
4. 12 dB/oct. or higher slope high-pass filter.

AMT200P 16Ω





CA8 AMT | HORN

KEY FEATURES

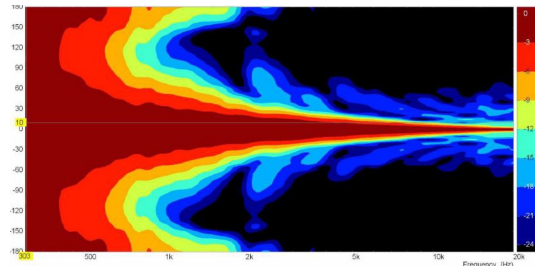
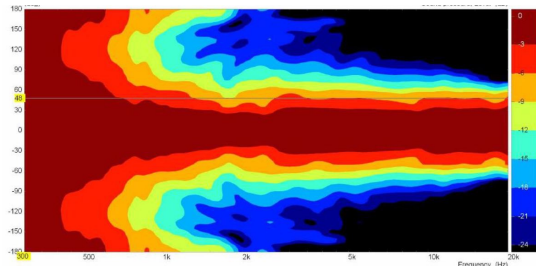
- 90° x 20° horizontal and vertical constant coverage
- Uniform on-axis and off-axis frequency response
- Very low distortion at high sound pressure
- High quality Aluminum structure
- Optimized heat dissipation

SPECIFICATIONS

Throat Diameter	167 mm (31.0 in)
Nominal Coverage Horizontal	90 °
Nominal Coverage Vertical	20 °
Cutoff Frequency	0.6 kHz
Material	Die-cast Aluminum
Design	Constant directivity
Dimensions	236(W) x 230(H) x153(D) mm (9.29x9.06x6.02 in)

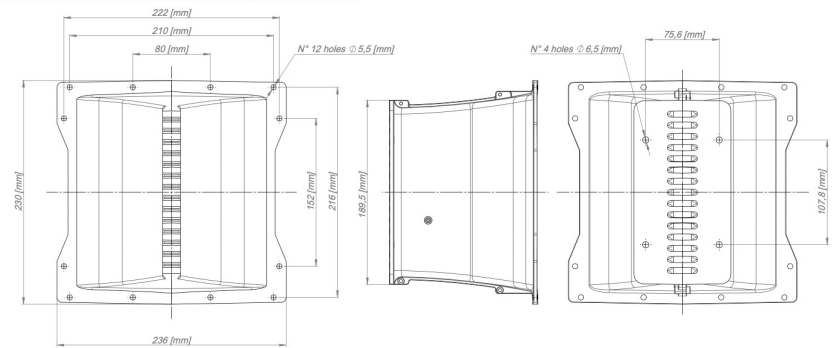
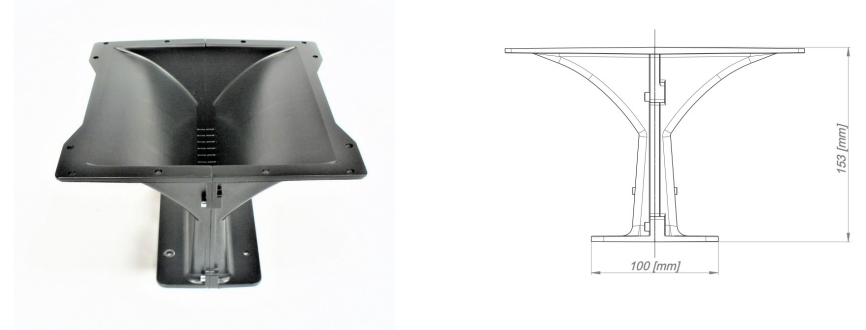
MOUNTING AND SHIPPING INFO

Baffle Cutout Dimension	200(W)x210(H) mm (7.87x8.27 in)
Net Weight	1.3 kg (2.87 lb)
Shipping Weight	1.8 kg (3.97 lb)



XMT200

90° (h) x 20° (v) constant coverage





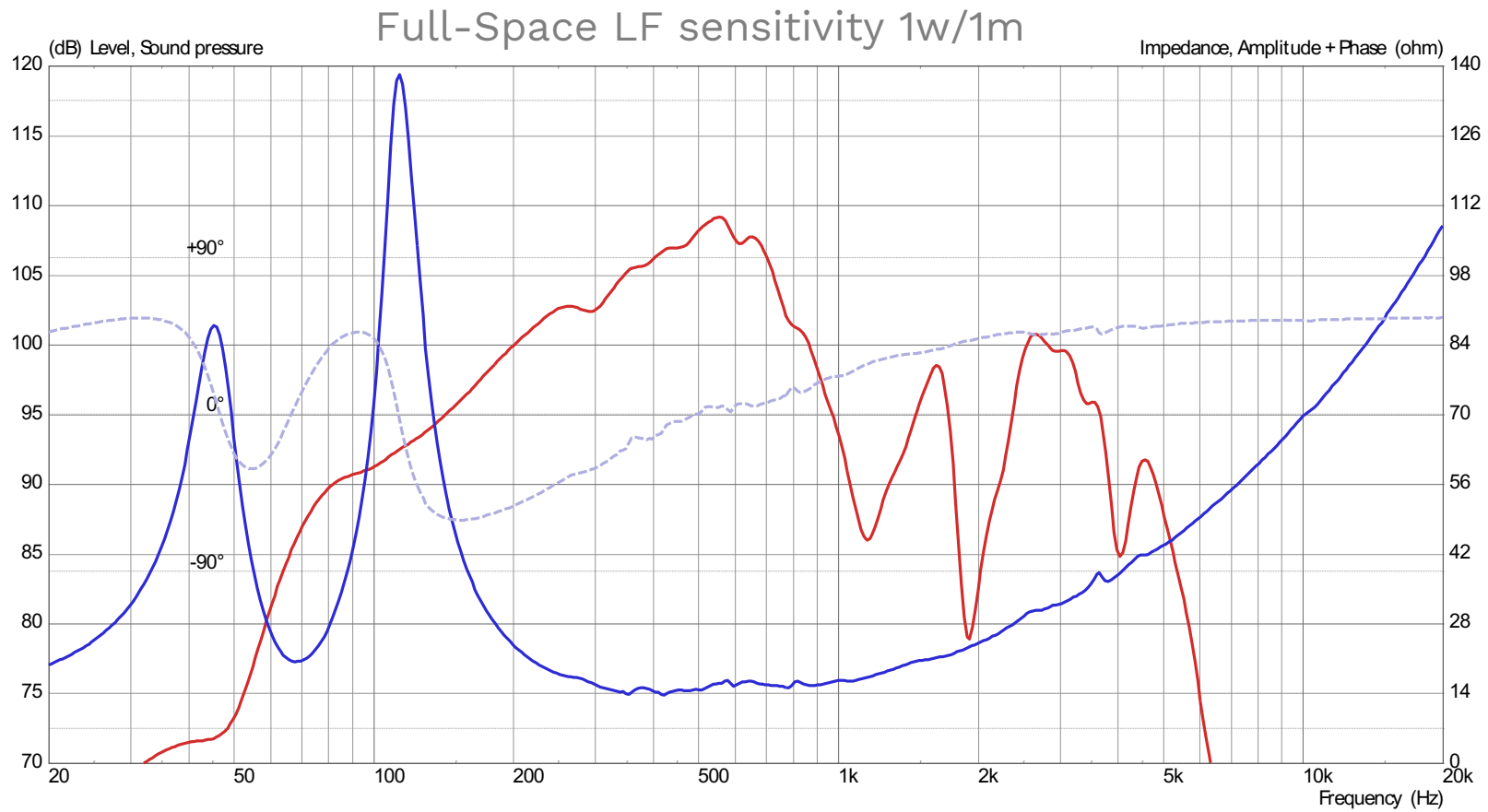
CA8 AMT | BILL OF MATERIALS

- 2x 8NTLW2000 – 8 ohm
- 1x AMT Driver – 16 ohm
- 1x AMT Horn
- 2x AMT Horn steel support
- 12x M5 Wood T-Nuts
- 8x M4 Hex socket CTSK head ISO 10642
- 12x M5 Hex socket head ISO 4762
- 2x Neutrik NL4MP
- Edilfiber damping material 30mm - 30kg/m³
- Low Density Felt 20mm thick
- Wood: 15mm Birch plywood



CA8 AMT | MEASUREMENTS

Frequency response & Impedance response

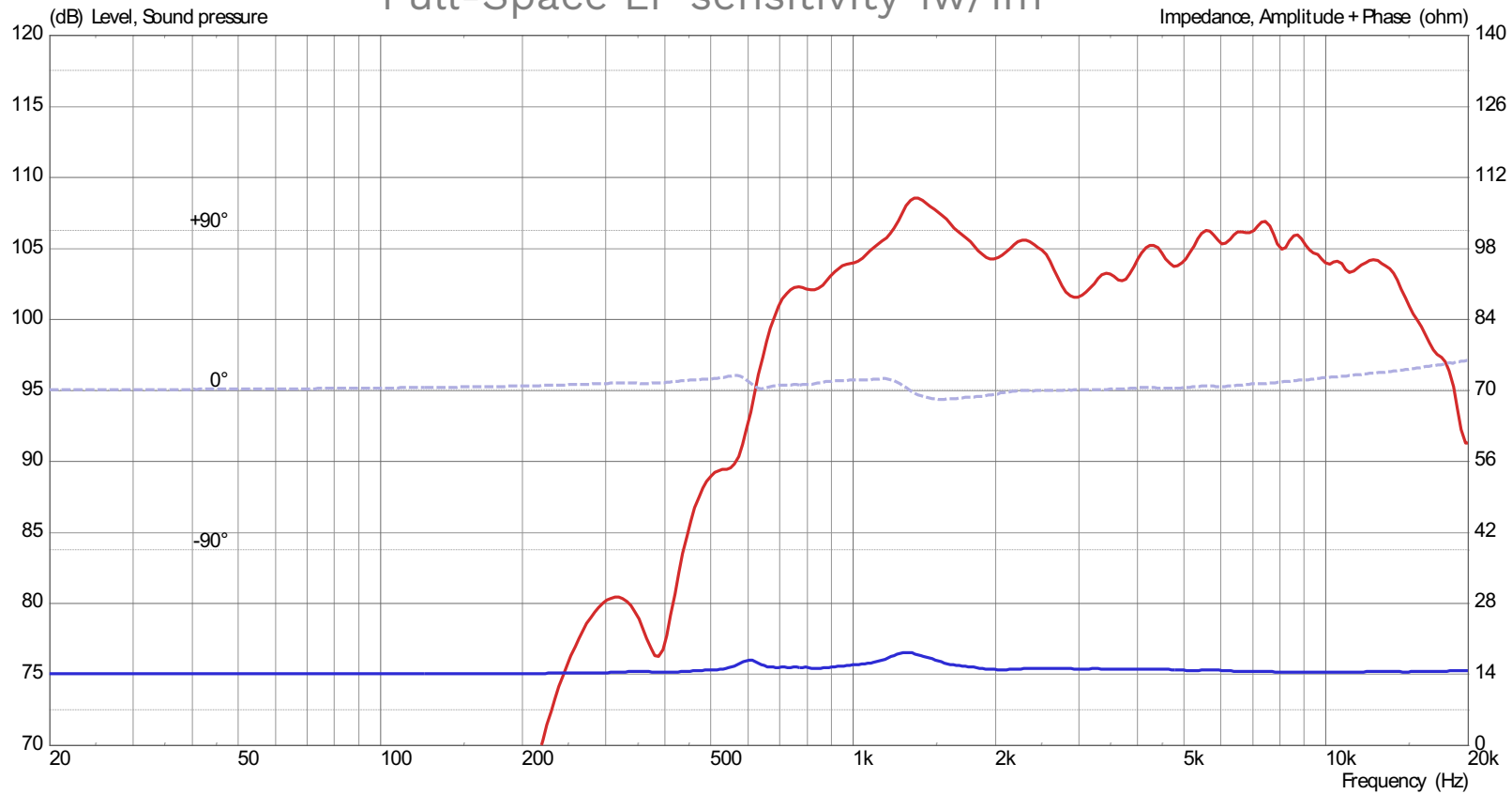




CA8 AMT | MEASUREMENTS

Frequency response & Impedance response

Full-Space LF sensitivity 1w/1m

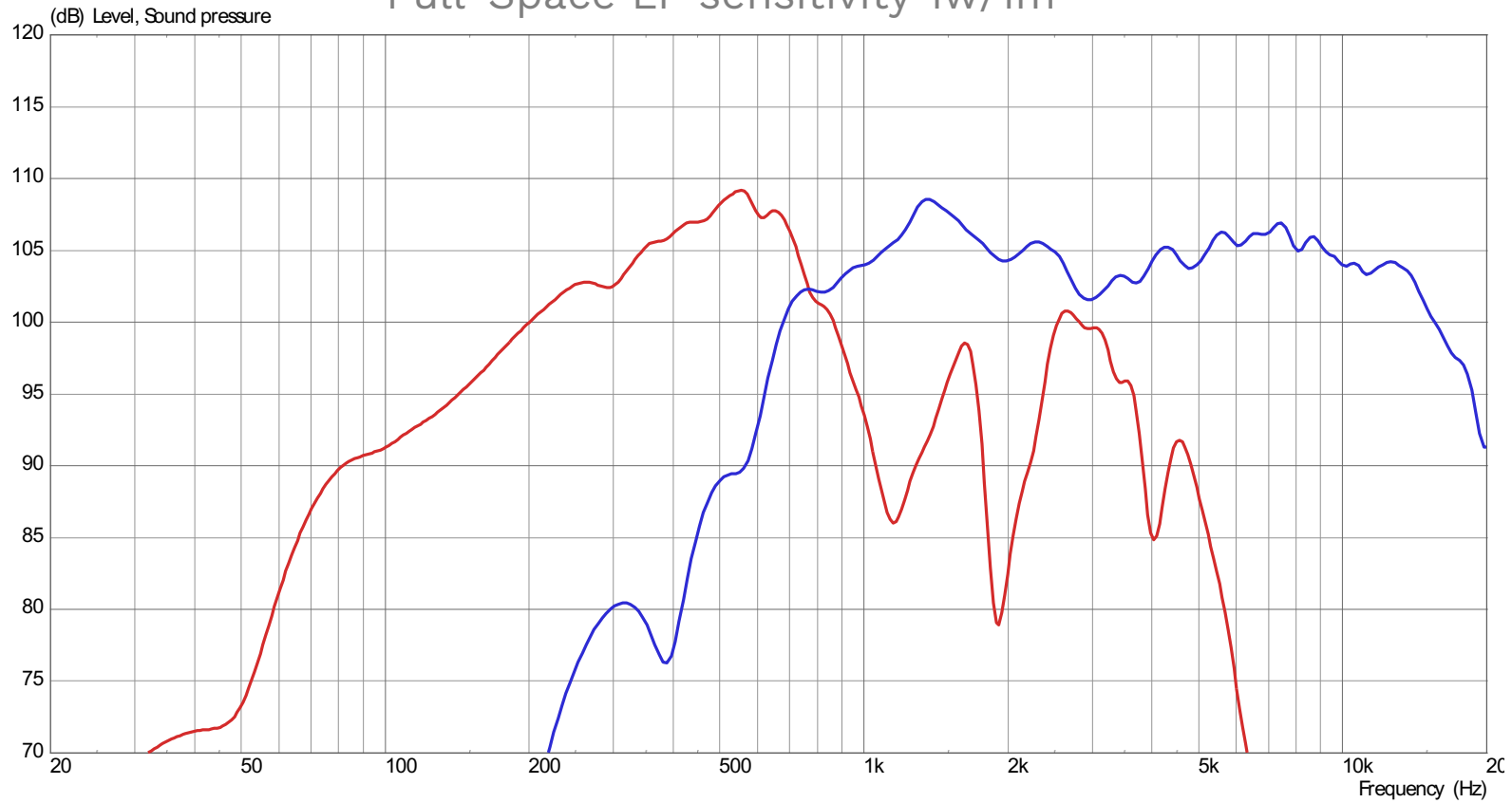




CA8 AMT | MEASUREMENTS

Frequency response

Full-Space LF sensitivity 1w/1m

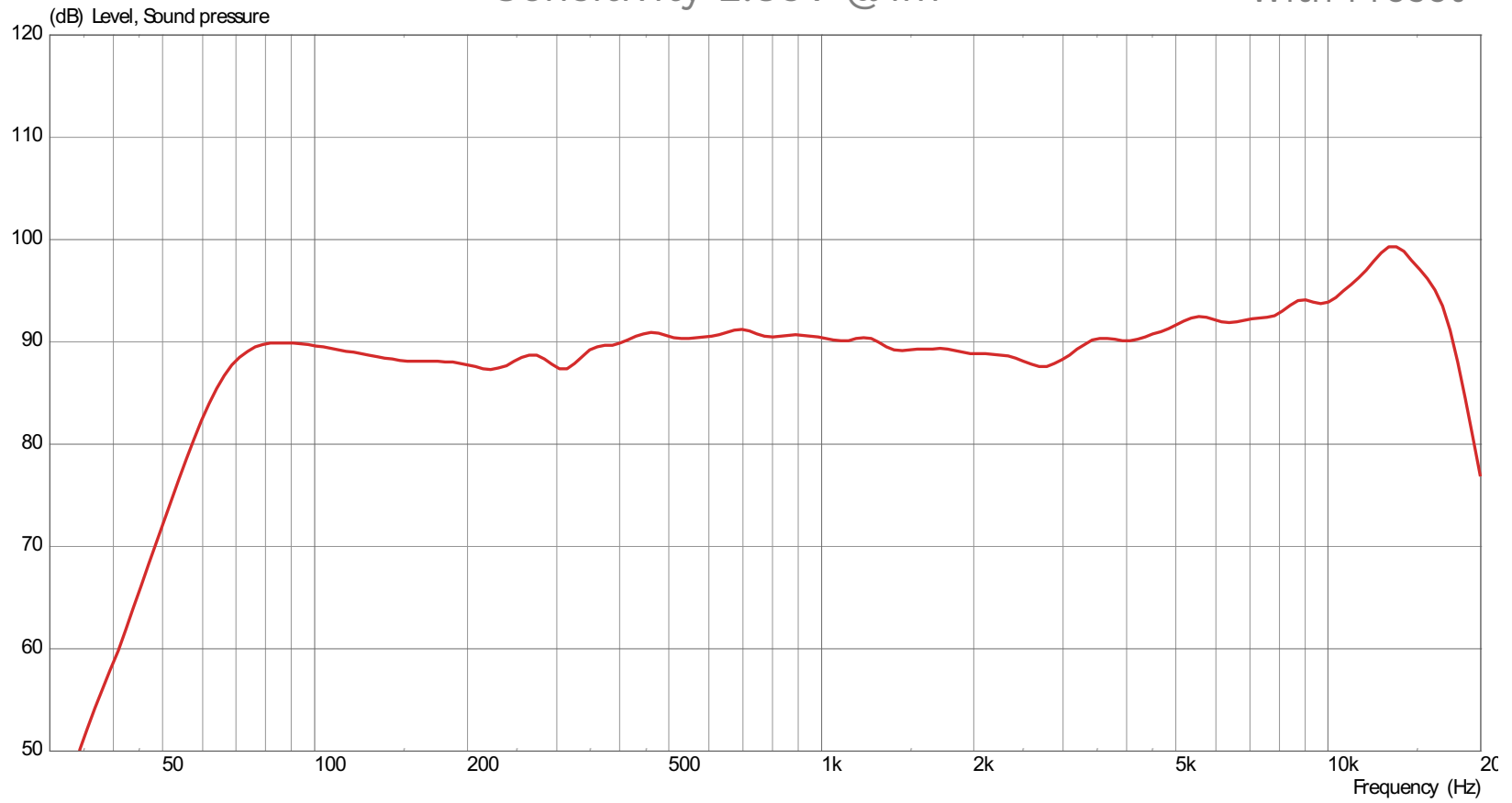




CA8 AMT | MEASUREMENTS

Sensitivity 2.83V @1m

With Preset

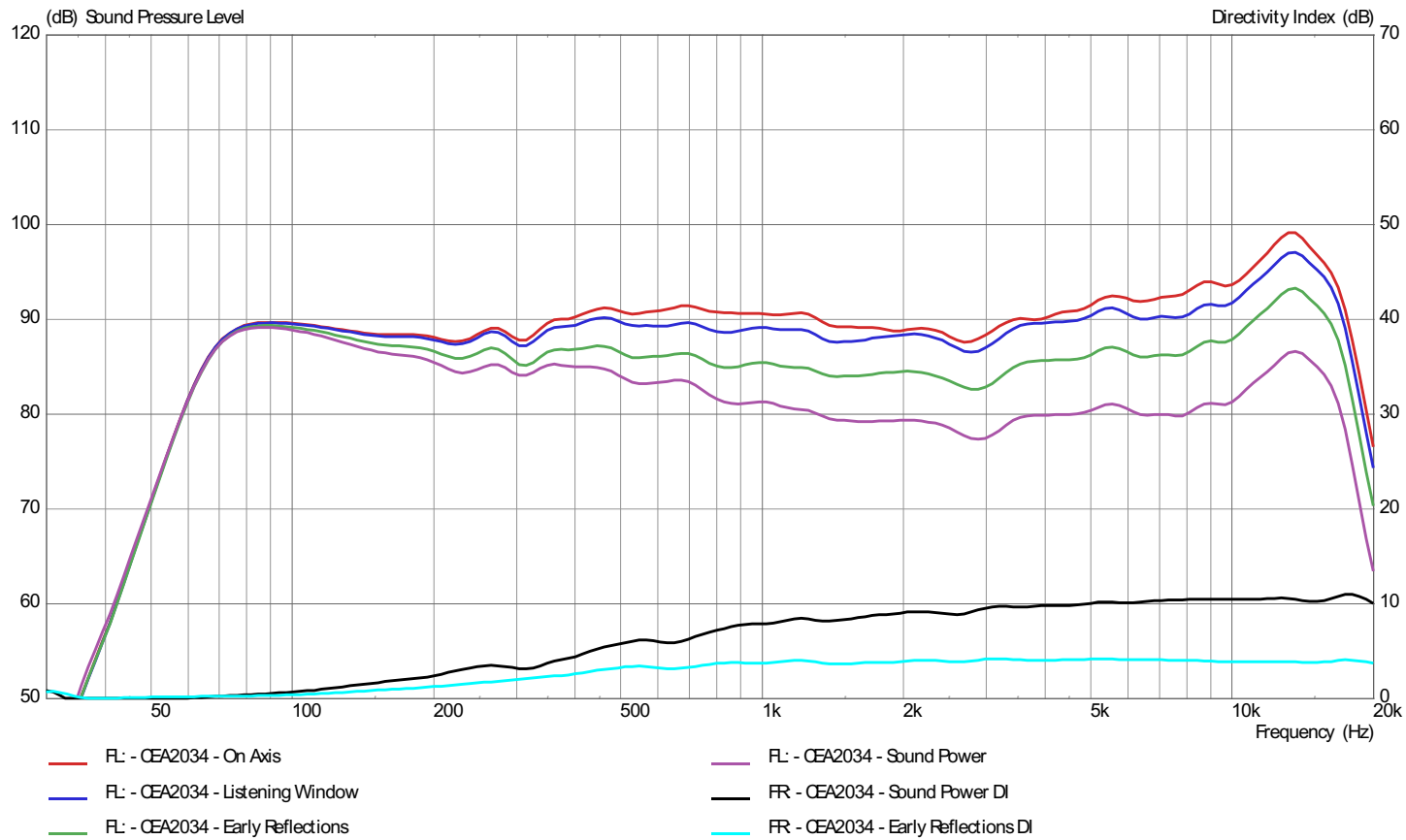




CA8 AMT | MEASUREMENTS

CEA2034

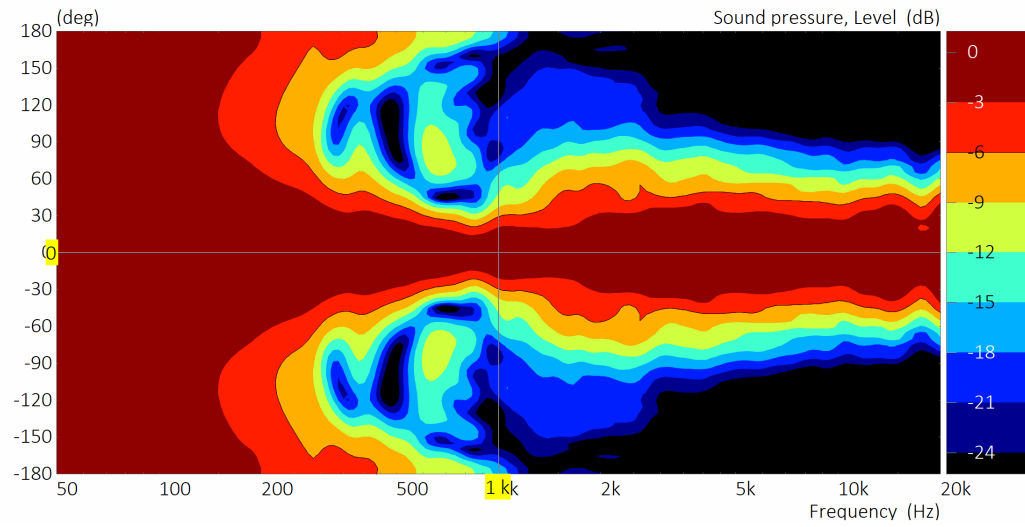
With Preset





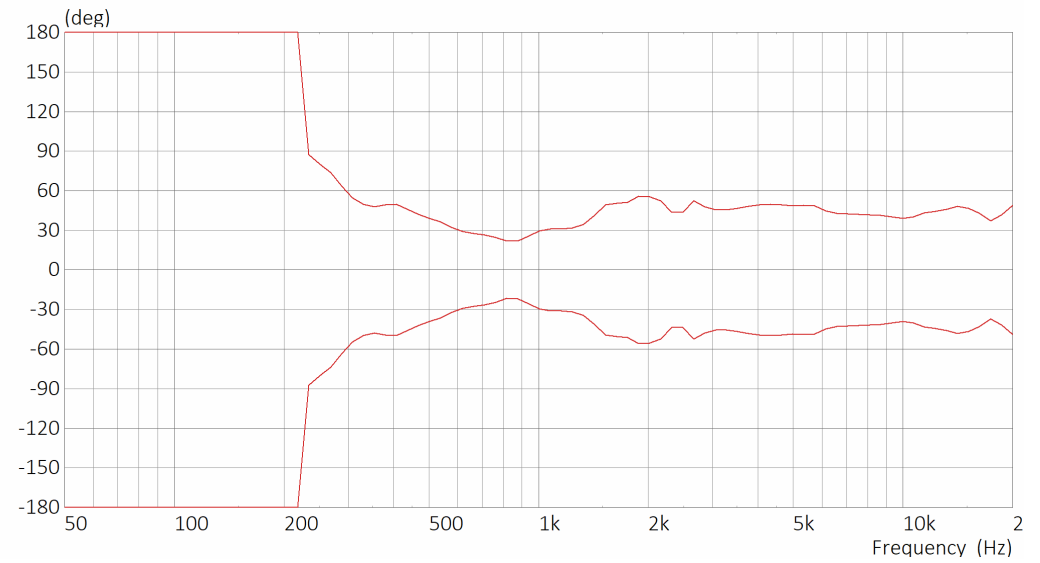
CA8 AMT | MEASUREMENTS

Horizontal Contour



With Preset

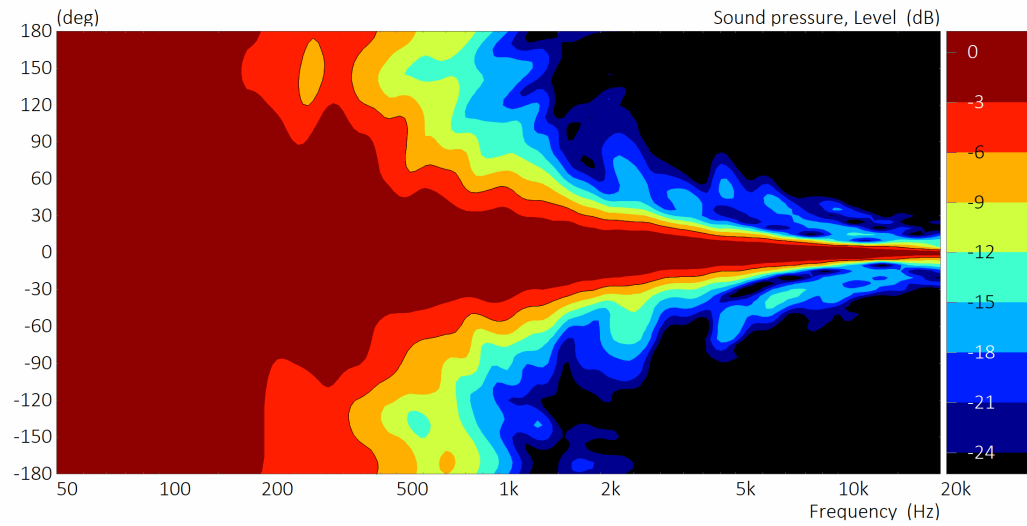
-6dB Beamwidth



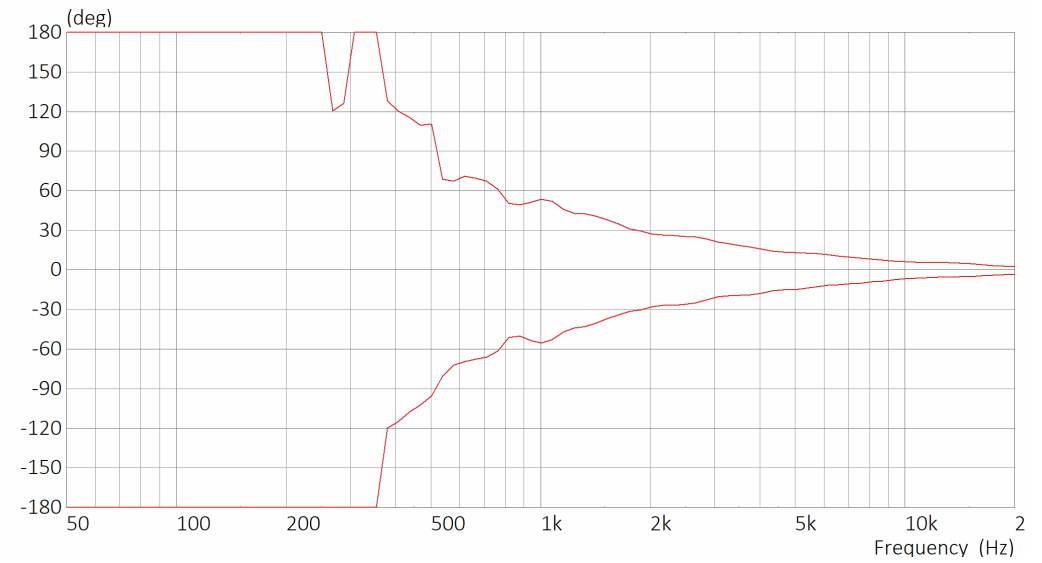


CA8 AMT | MEASUREMENTS

Vertical Contour



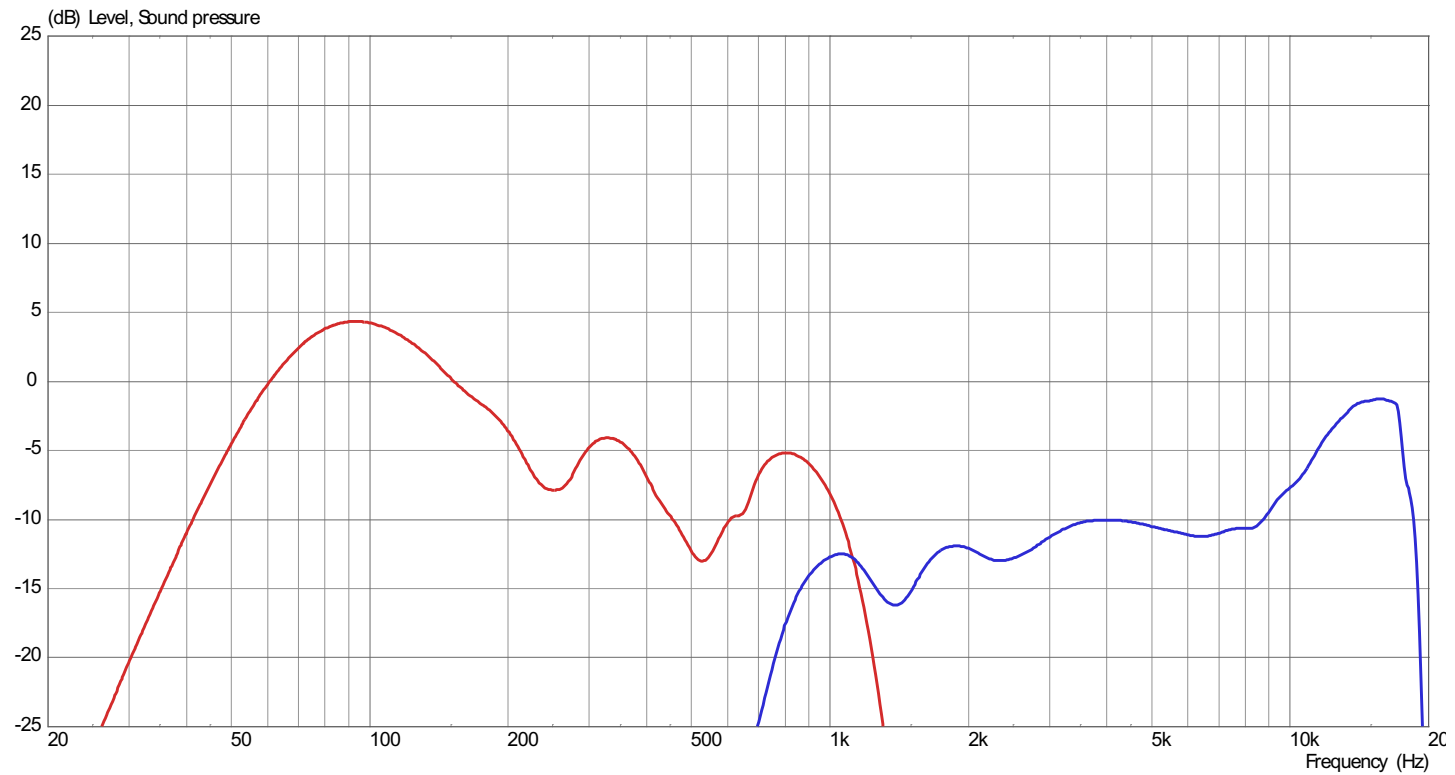
With Preset





CA8 AMT | PROCESSING

LF & HF



Transfer Function



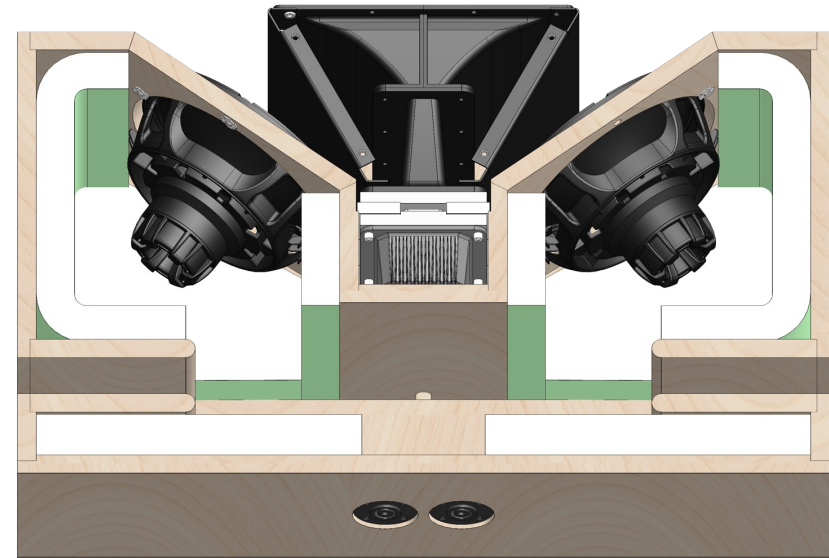
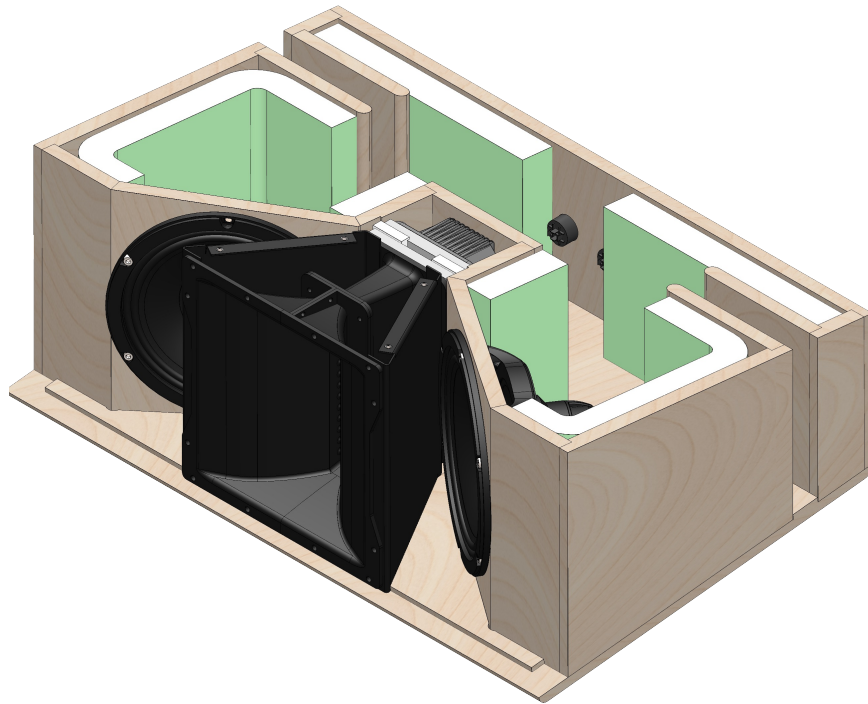
CA8 AMT

Assembly Information



CA8 AMT | DAMPING MATERIAL

Edilfiber (Polyester) 30kg/m³ – 30mm thick

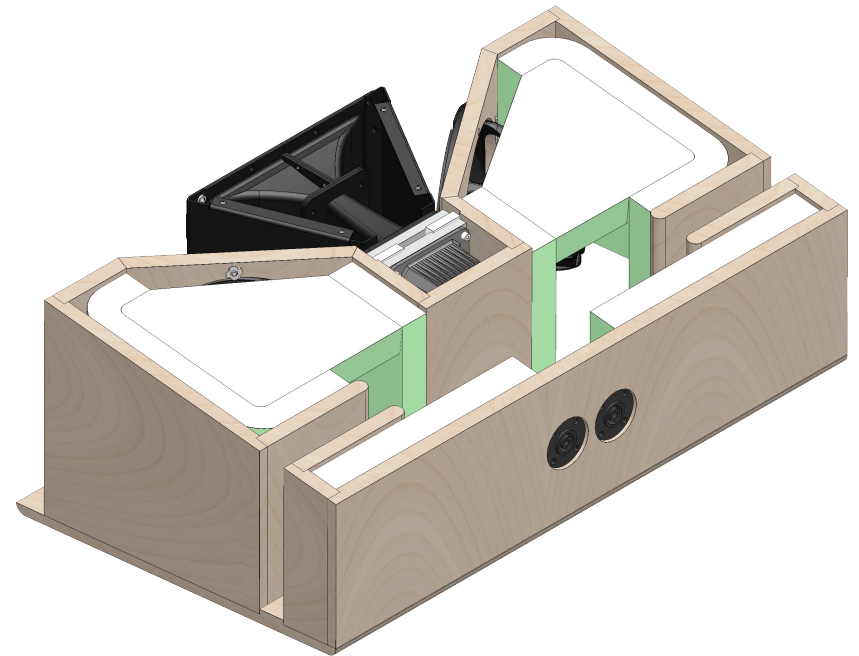
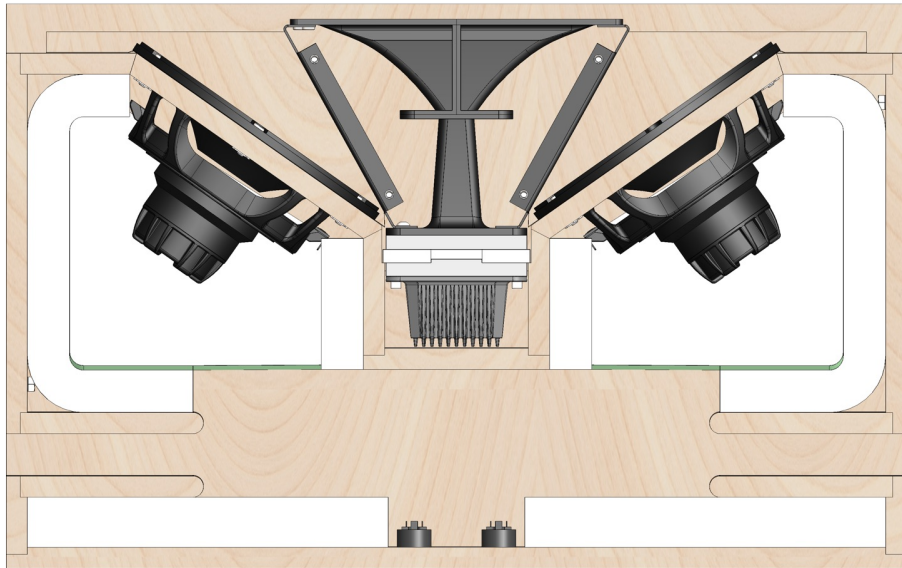


Follow carefully the quantity and positioning



CA8 AMT | DAMPING MATERIAL

Edilfiber (Polyester) 30kg/m³ – 30mm thick

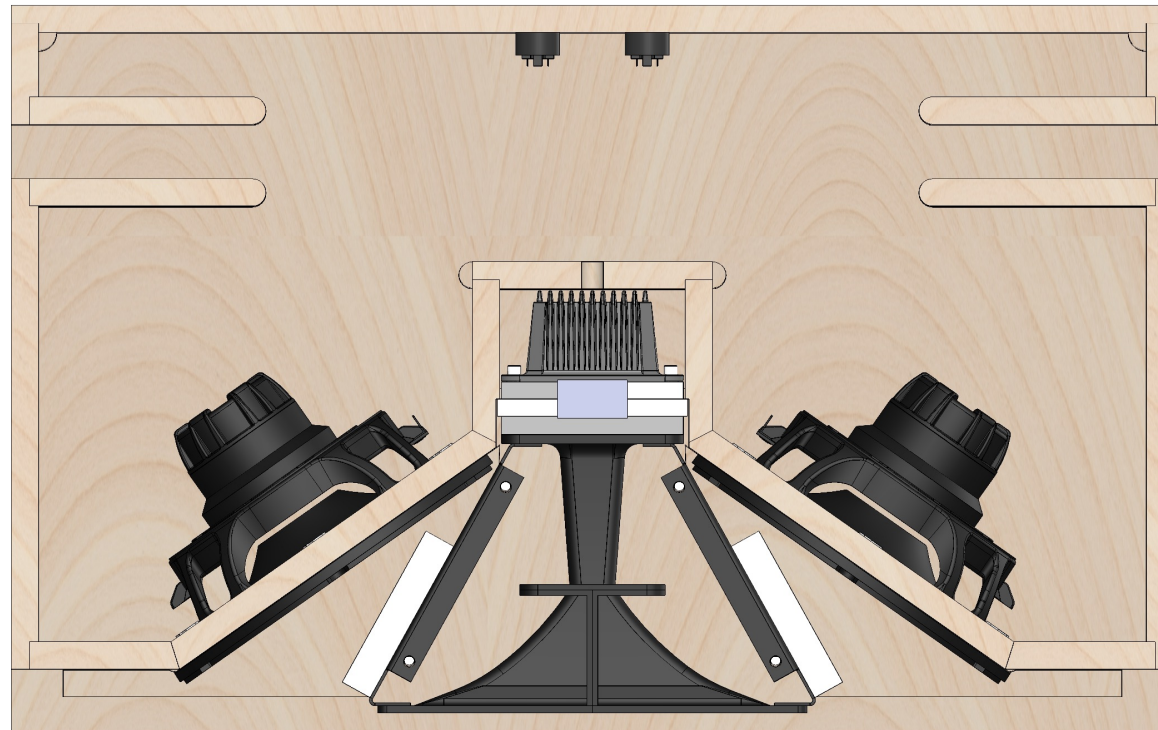


Follow carefully the quantity and positioning



CA8 AMT | DAMPING MATERIAL

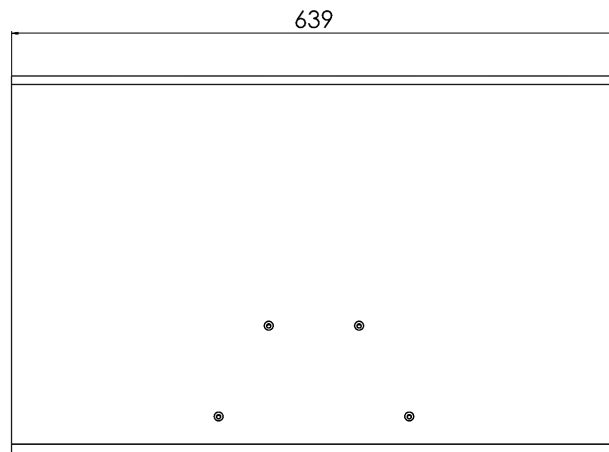
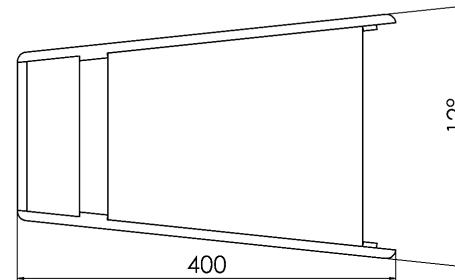
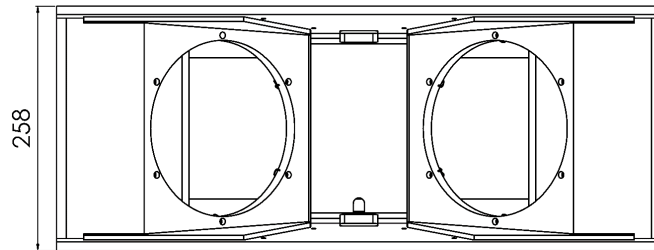
High Density 20mm thick - FELT





CA8 AMT | DIMENSIONS

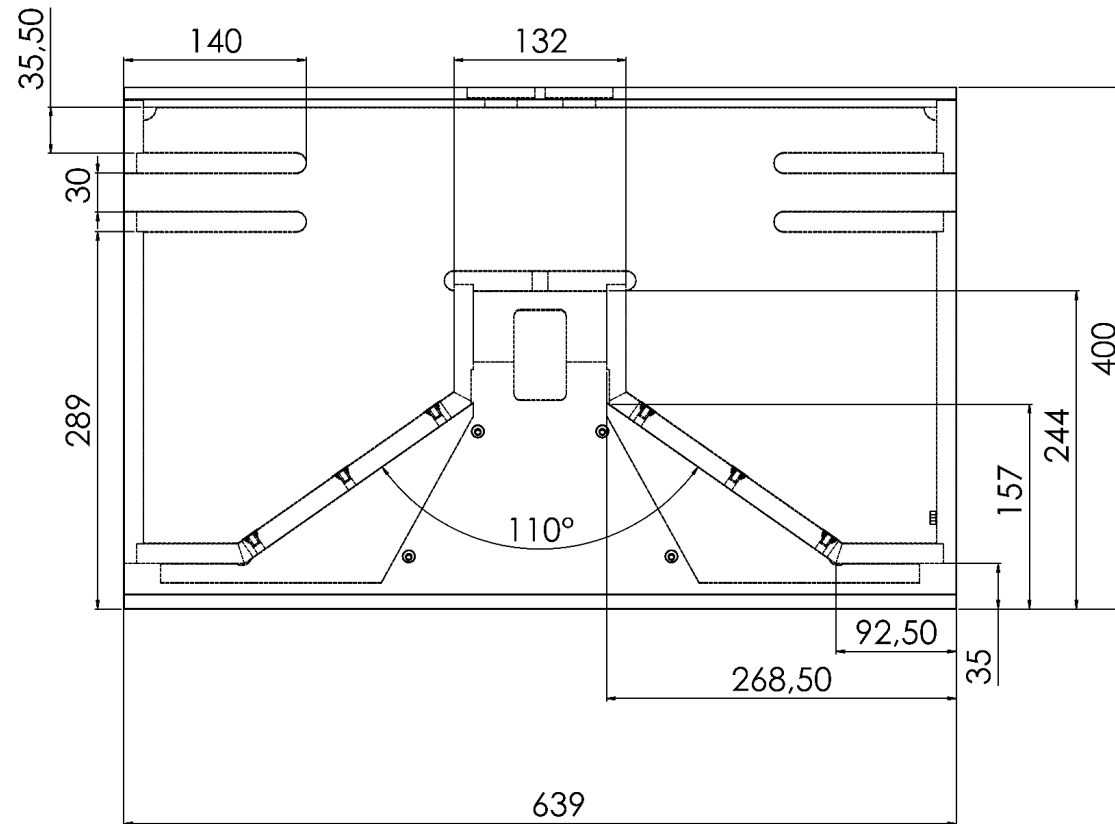
Total dimensions





CA8 AMT | DIMENSIONS

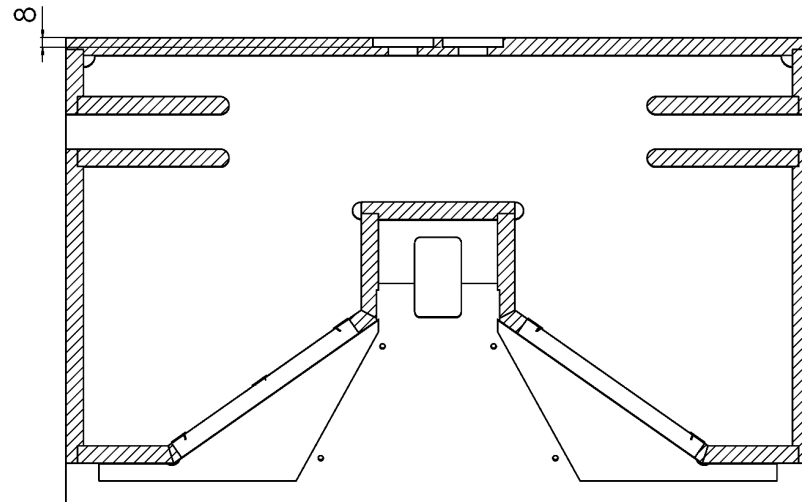
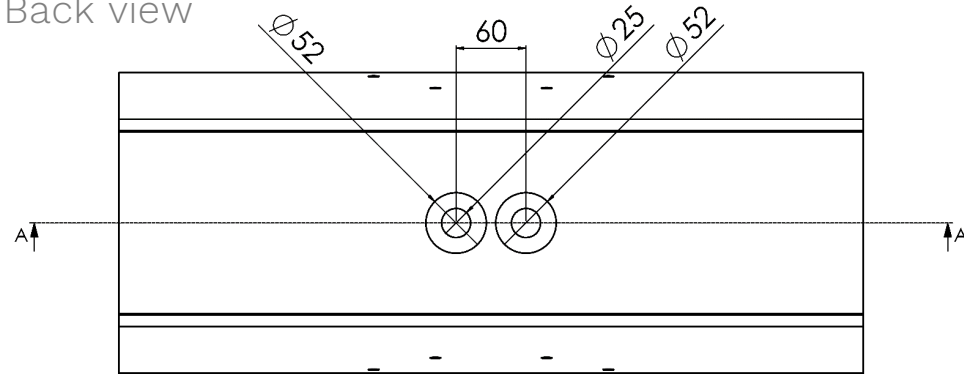
Top view





CA8 AMT | DIMENSIONS

Back view

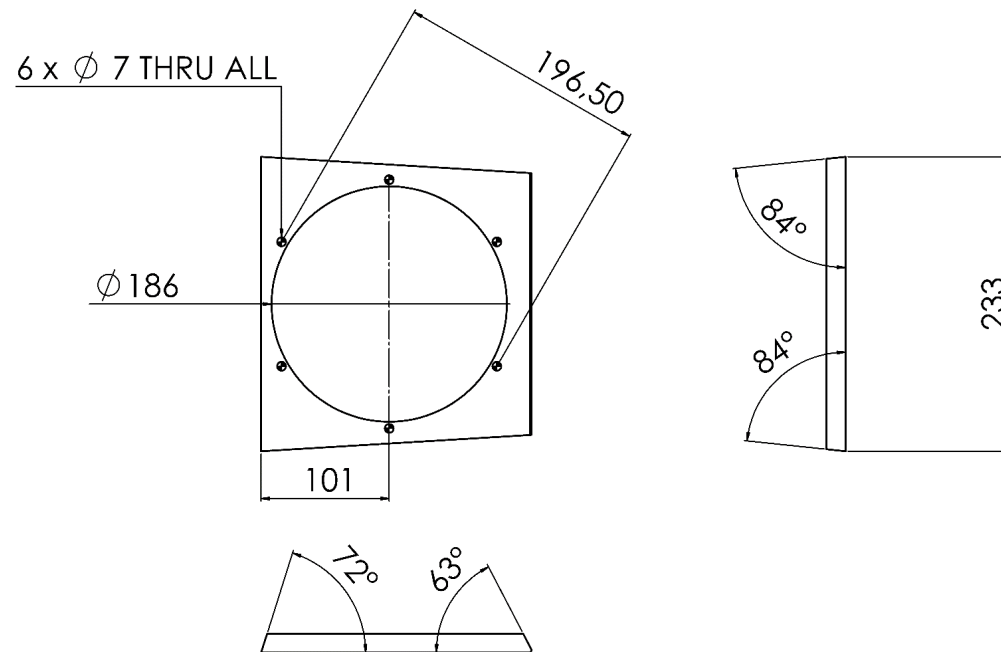


SECTION A-A



CA8 AMT | DIMENSIONS

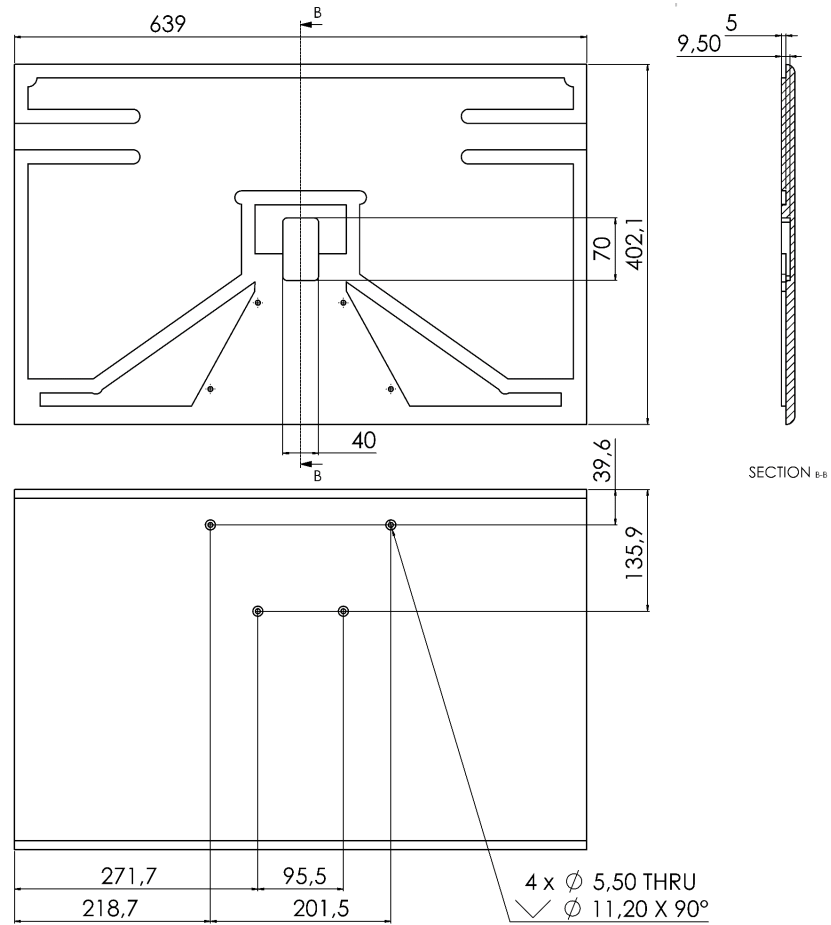
Baffle





CA8 AMT | DIMENSIONS

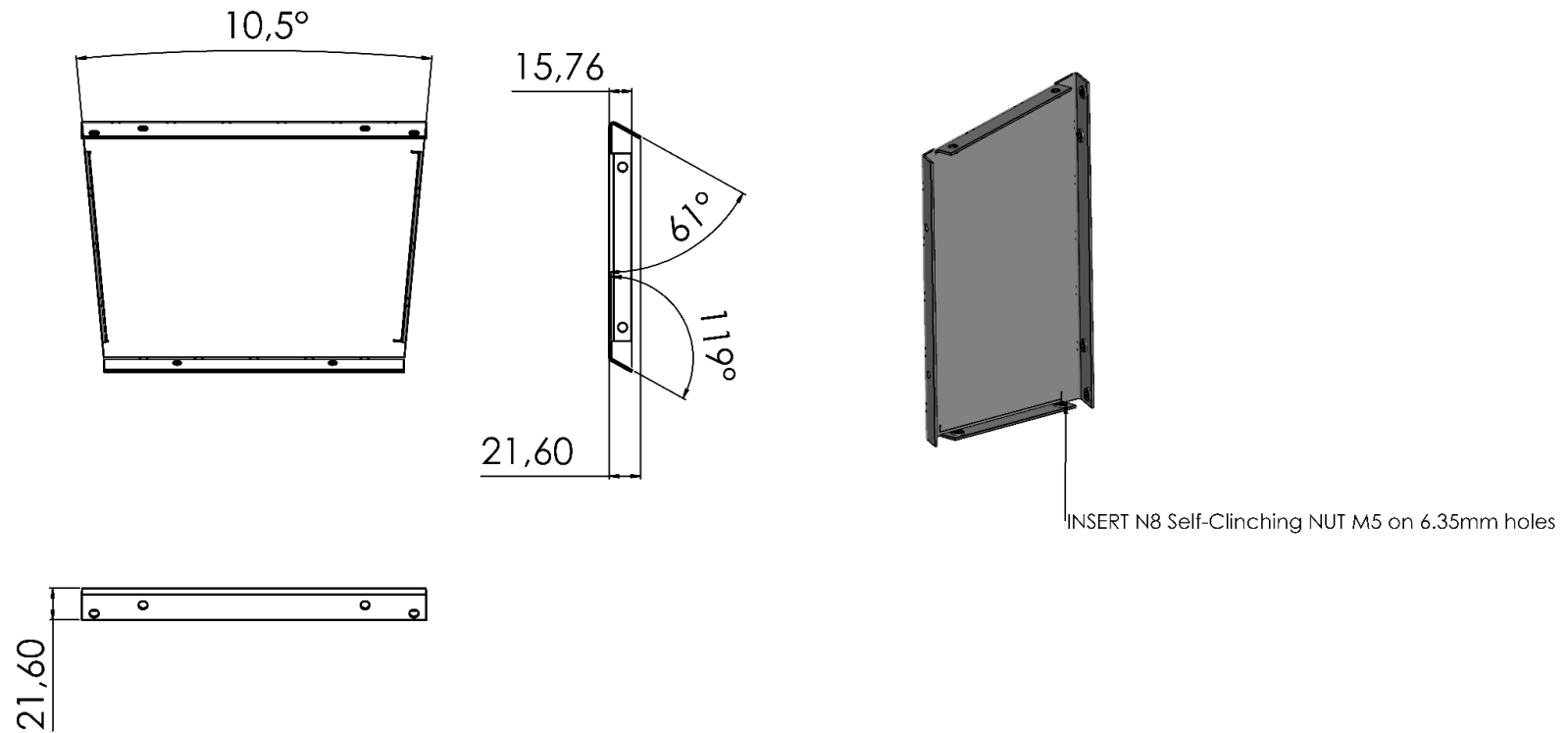
Top and bottom panel





CA8 AMT | DIMENSIONS

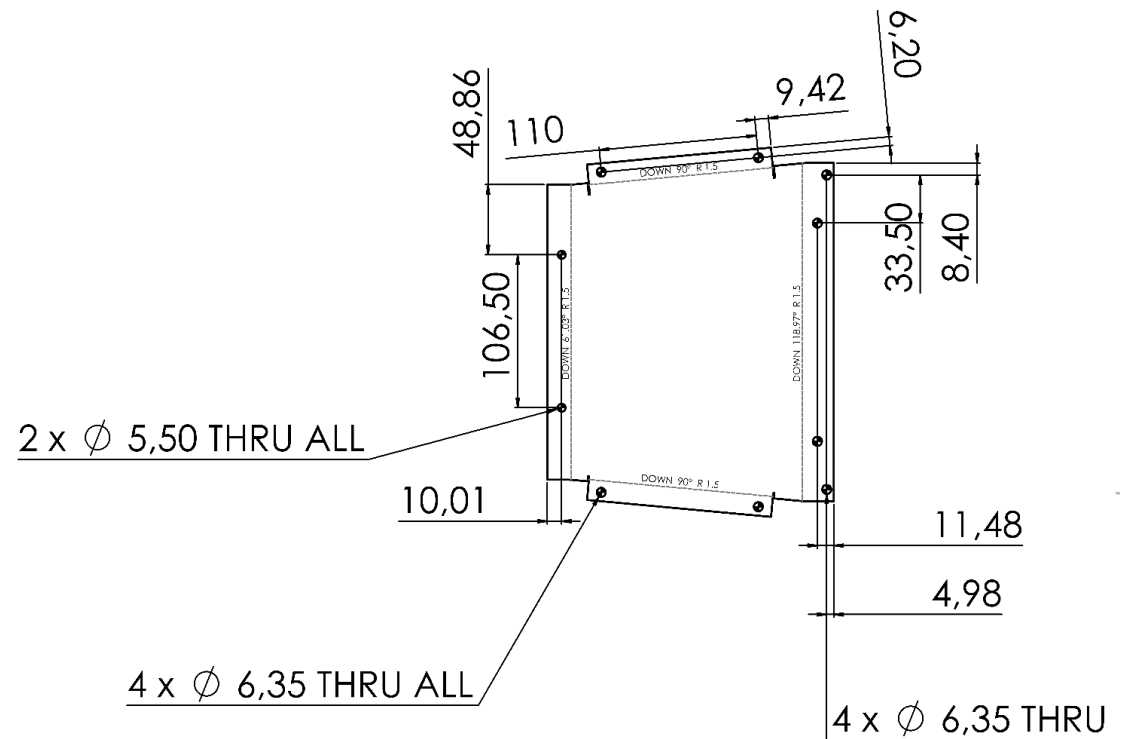
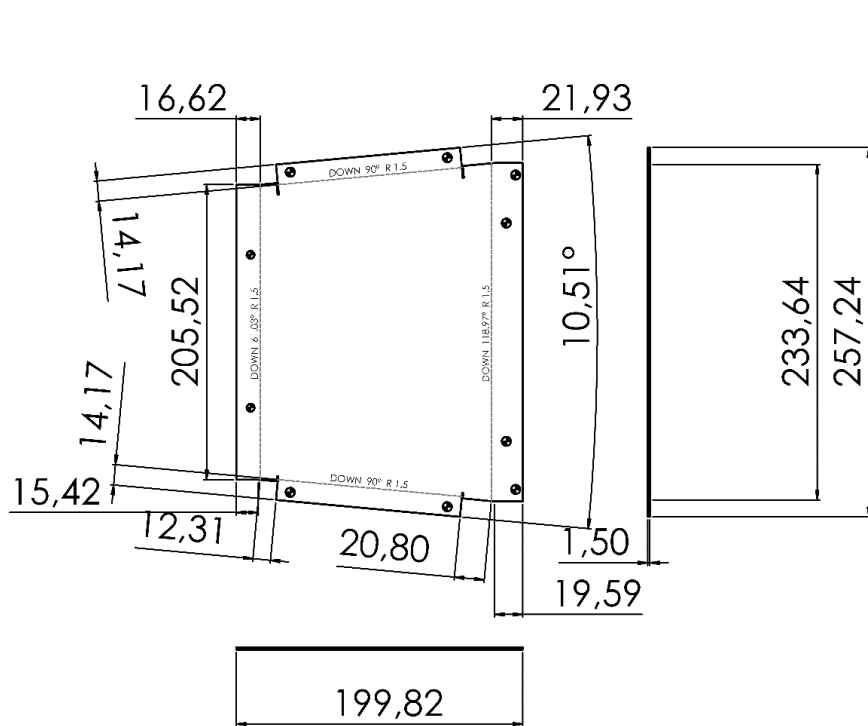
Horn steel support





CA8 AMT | DIMENSIONS

Horn steel support – flat pattern





CA8 AMT | NOTES