

## **S218 NTLW**

High power, bandpass Subwoofer

2 x 18NTLW5000



# S218 NTLW | SPEAKERS

## SPECIFICATIONS

Nominal Impedance	8 Ω
Minimum Impedance	6.8 Ω
Nominal Power Handling <sup>1</sup>	1800 W
Continuous Power Handling <sup>2</sup>	4000 W
Sensitivity <sup>3</sup>	95.0 dB
Frequency Range	30 - 1800 Hz
Voice Coil Diameter	115 mm (4.5 in)
Winding Material	aluminum

## PARAMETERS<sup>4</sup>

Resonance Frequency	32 Hz
Re	5.5 Ω
Qes	0.33
Qms	8.52
Qts	0.32
Vas	176.0 dm <sup>3</sup> (6.22 ft <sup>3</sup> )
Sd	1156.0 cm <sup>2</sup> (179.18 in <sup>2</sup> )
Xmax	17.5 mm
Mms	295.0 g
Bl	31.3 Txm
Le	1.85 mH
EBP	96 Hz

## KEY FEATURES

- 95 dB SPL 1W / 1m average sensitivity
- Dual 115mm (4,5 in) Tetracoil Aluminum Voice coil
- 4000 W program power handling
- Ultra linear suspension behavior for excellent sound clarity
- Symmetric flux density and inductance behaviour
- Low noise forced air cooling design
- Water repellent cone and epoxy coated plates
- Suitable for vented, horn loaded and bandpass applications

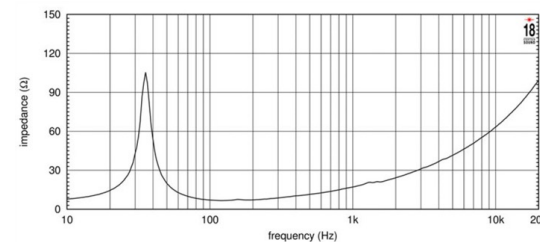
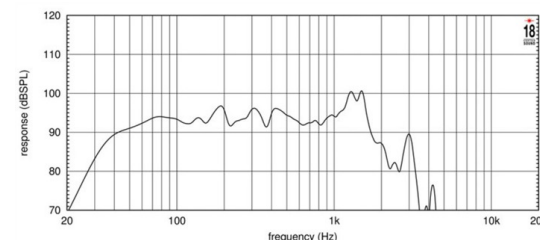
## DESIGN

Surround Shape	Triple roll
Cone Shape	Curvilinear
Magnet Material	Neo
Woofer Cone Treatment	Water, UV repellent
Recommended Enclosure	180.0 dm <sup>3</sup> (6.36 ft <sup>3</sup> )
Recommended Tuning	35 Hz

## MOUNTING AND SHIPPING INFO

Overall Diameter	462 mm (18.19 in)
Bolt Circle Diameter	440 mm (17.32 in)
Baffle Cutout Diameter	416.0 mm (16.38 in)
Depth	310 mm (12.2 in)
Flange and Gasket Thickness	26 mm (1.02 in)
Net Weight	12.0 kg (26.46 lb)
Shipping Weight	12.8 kg (28.22 lb)

# 18NTLW5000 8Ω



1. 2 hours test made with continuous pink noise signal within the range Fs-10Fs. Power calculated on rated minimum impedance. Loudspeaker in free air.  
 2. Power on Continuous Program is defined as 3 dB greater than the Nominal rating.  
 3. Applied RMS Voltage is set to 2.83 V for 8 ohms Nominal Impedance.  
 4. Thiele-Small parameters are measured after a high level 20 Hz sine wave preconditioning test.



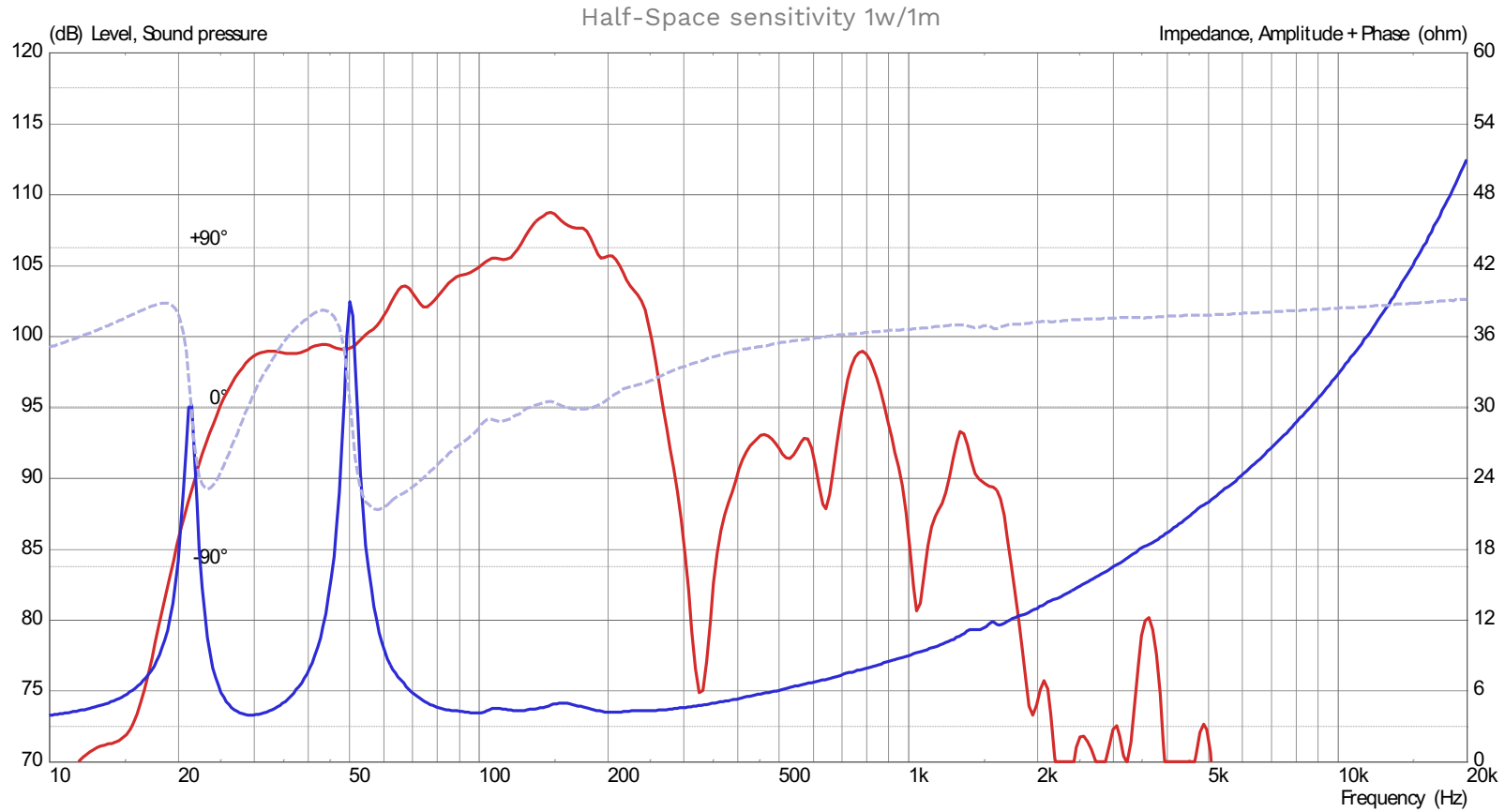
## **S218 NTLW** | BILL OF MATERIALS

- 2x 18NTLW5000 – 8 ohm
- 16x M6 Wood T-Nuts
- 16x M6 Hex socket head ISO 4762 with washer and grower washer
- 2x Neutrik NL4MPR
- Edilfiber damping material 30mm - 30kg/m<sup>3</sup>



# S218 NTLW | MEASUREMENTS

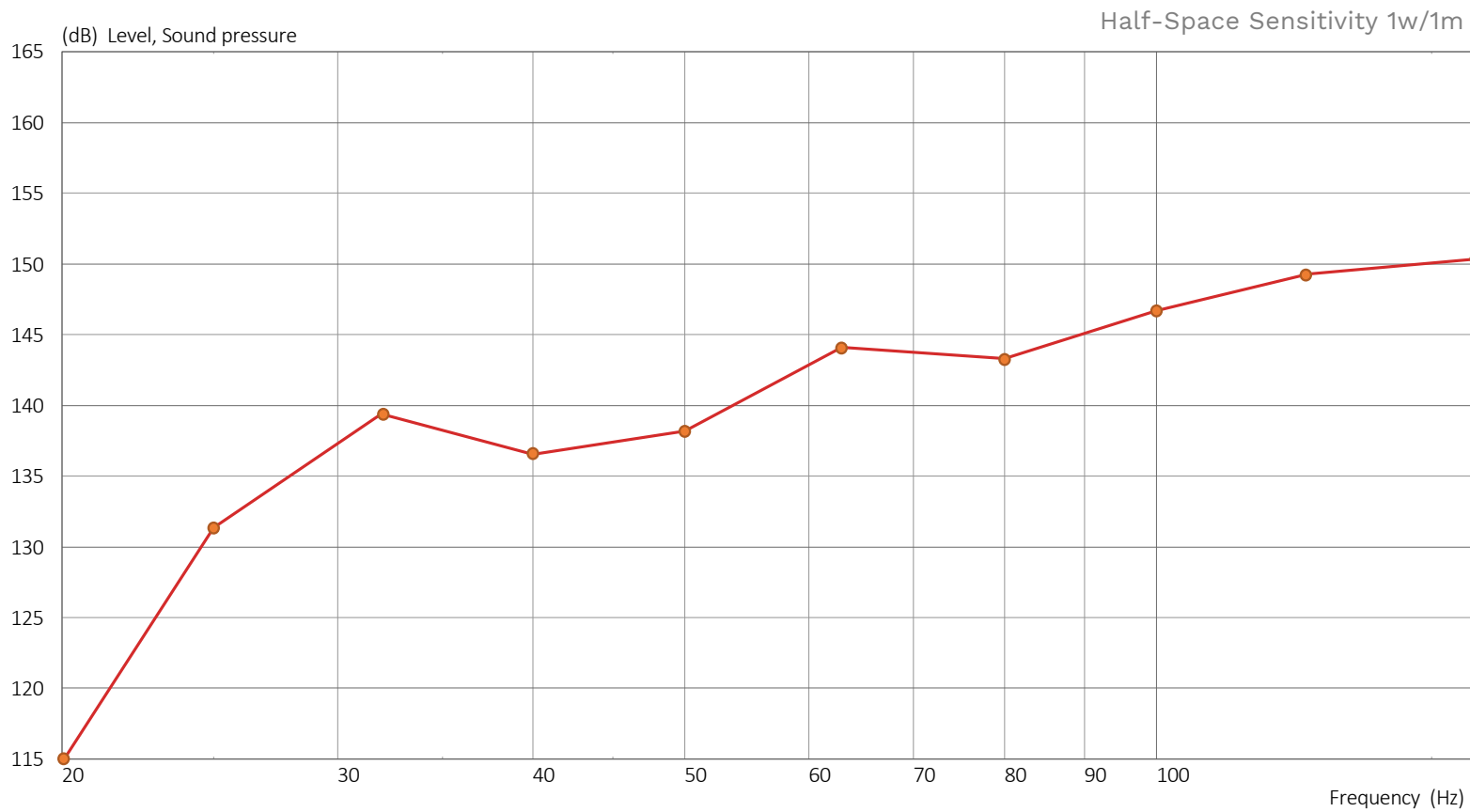
Frequency response & Impedance response





# S218 NTLW | MEASUREMENTS

CEA2010B

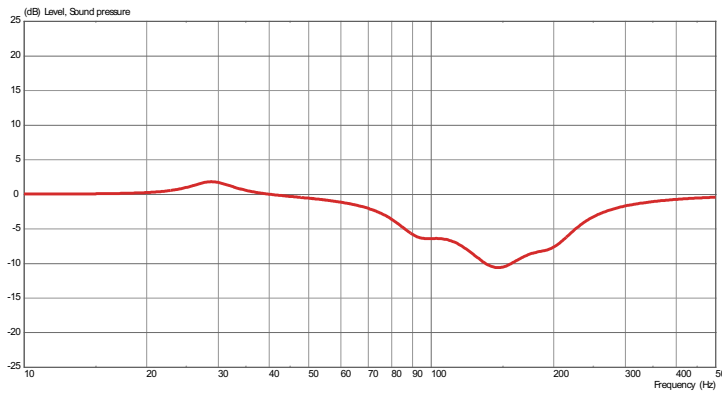


Tone Burst Center Frequency (Hz)	Weighted & Limited Maximum SPL (dB)
20	112
25	130
32	139
40	136
50	138
63	143
80	143
100	143
125	143
160	143



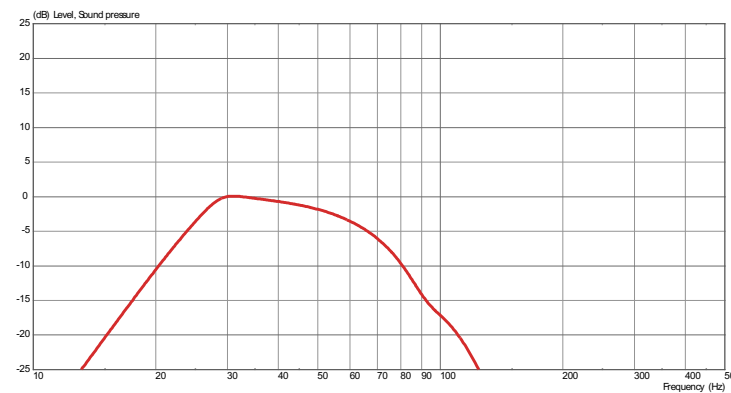
# S218 NTLW | PROCESSING

Equalization curve



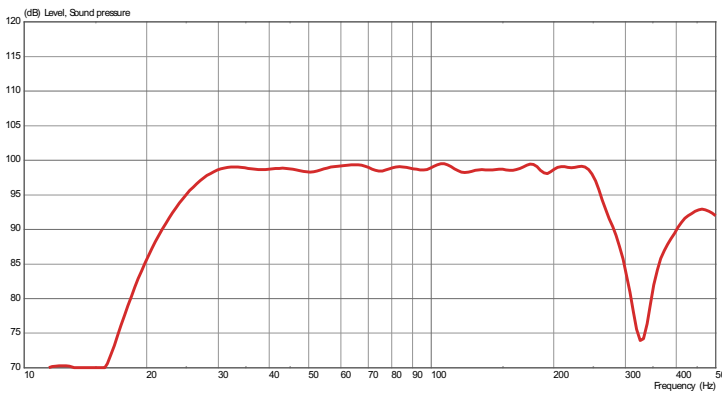
Equalization points:  
Pk: Frq: 29Hz - Q:3 - Gain: 2dB  
Pk: Frq: 93Hz - Q:3 - Gain: -3.4dB  
Pk: Frq: 145Hz - Q:1.8 - Gain: -9.5dB  
Pk: Frq: 200Hz - Q:3 - Gain: -3.4dB

Equalization curve with HPF & LPF

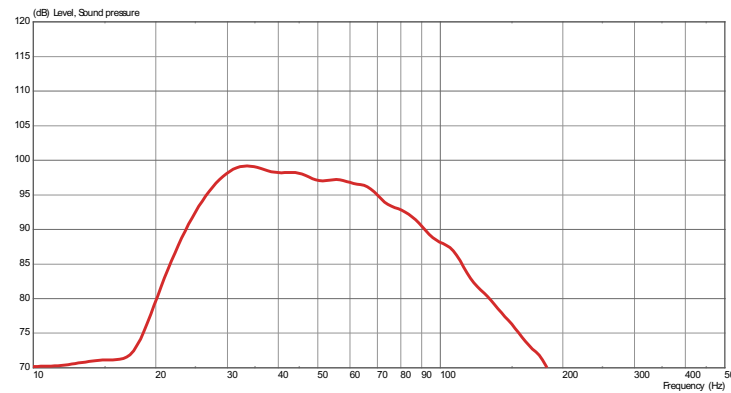


HPF:  
BTW 24dB/oct @ 27Hz  
  
LPF:  
LR 24dB/oct @ 80Hz

Subwoofer response



Subwoofer response





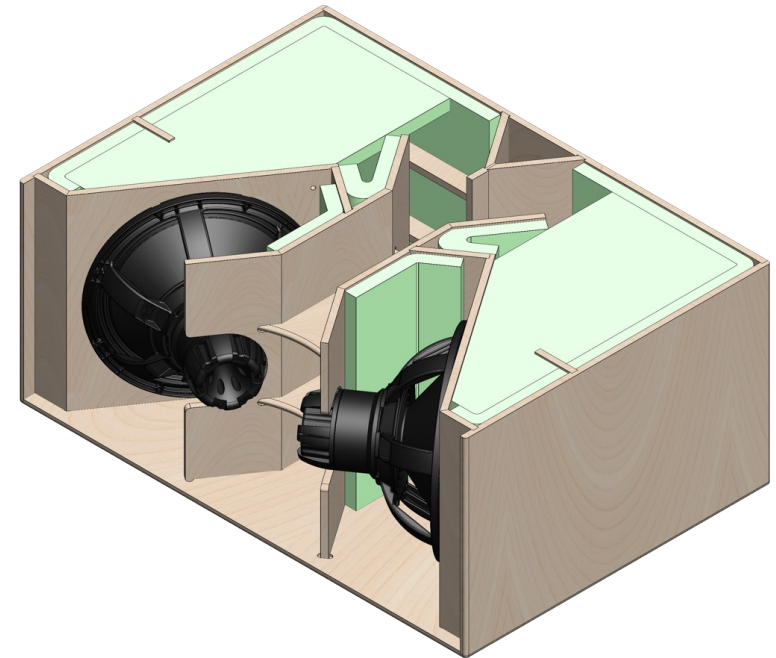
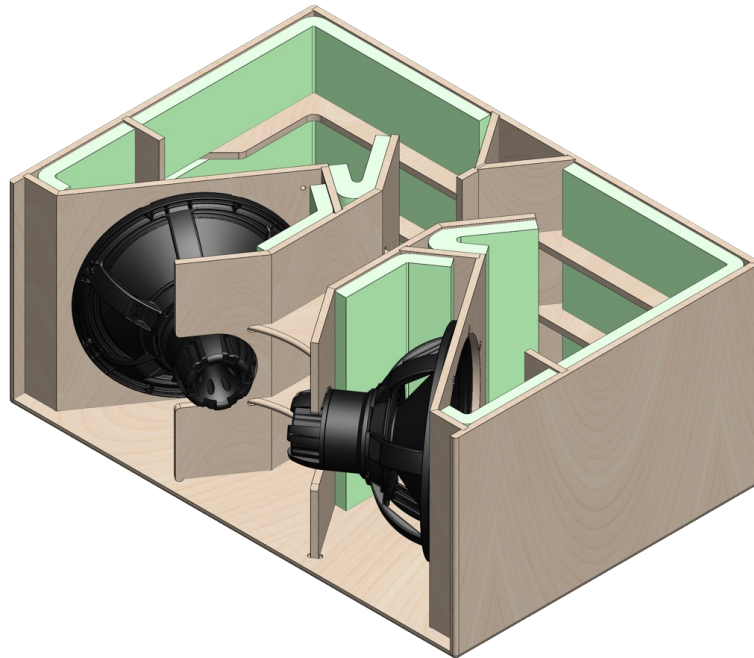
# **S218 NTLW**

Assembly Information



# S218 NTLW | DAMPING MATERIAL

Edilfiber (Polyester) 30kg/m<sup>3</sup> – 30mm thick



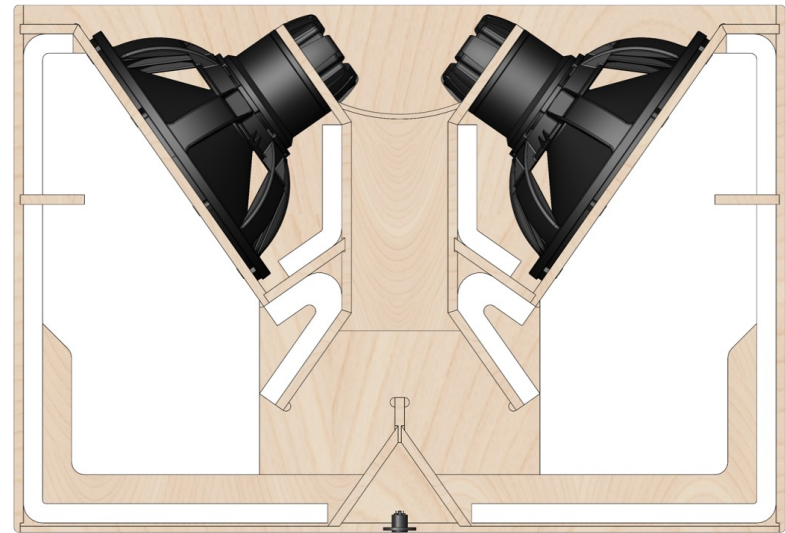
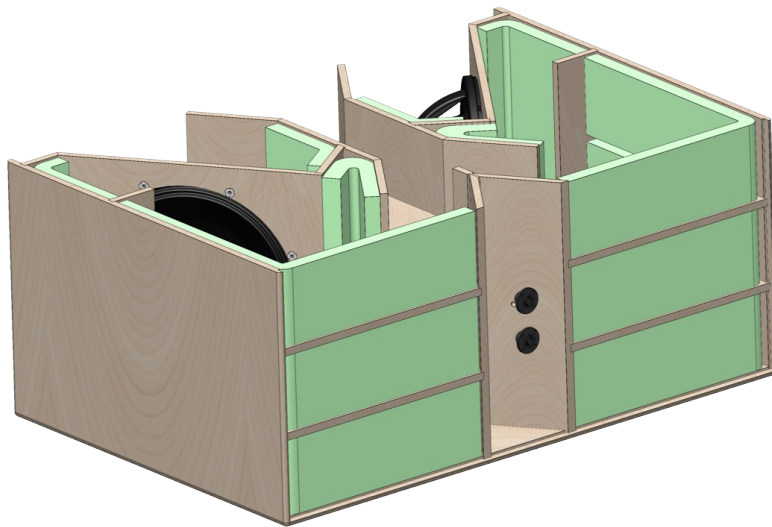
*Follow carefully the quantity and positioning*





# S218 NTLW | DAMPING MATERIAL

Edilfiber (Polyester) 30kg/m<sup>3</sup> – 30mm thick

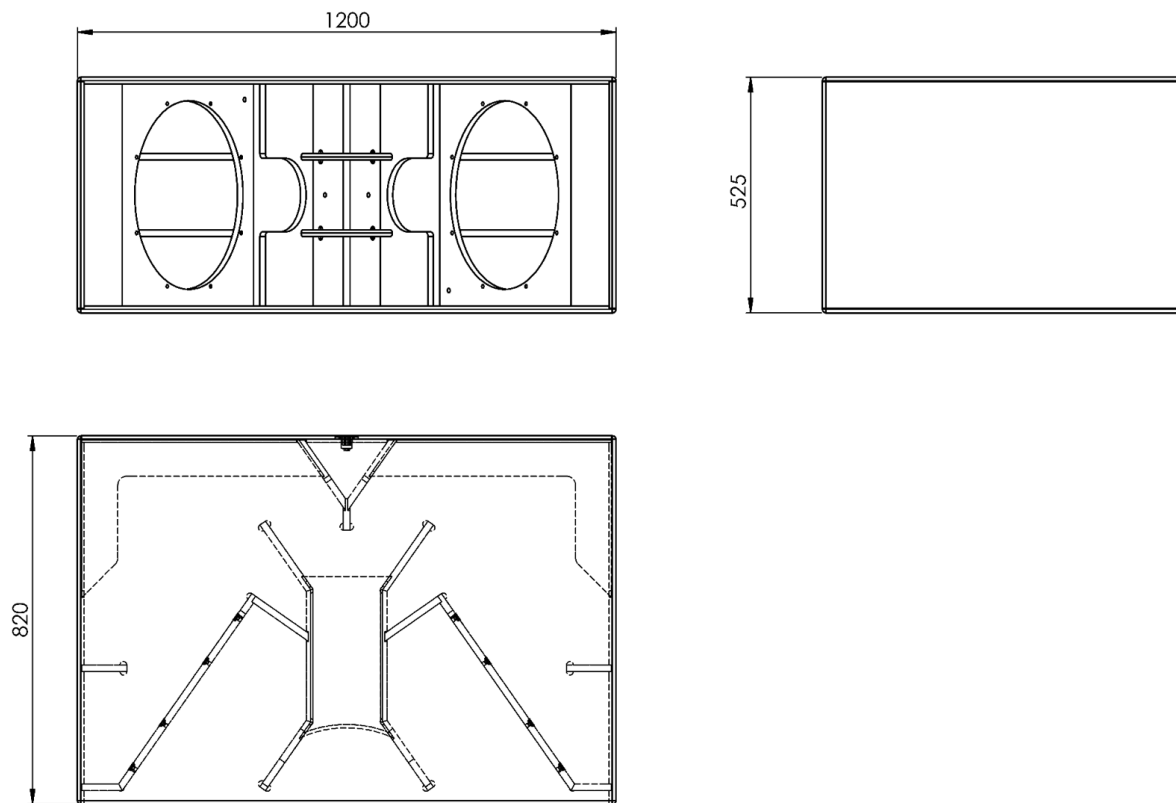


*Follow carefully the quantity and positioning*



# S218 NTLW | DIMENSIONS

Total dimensions

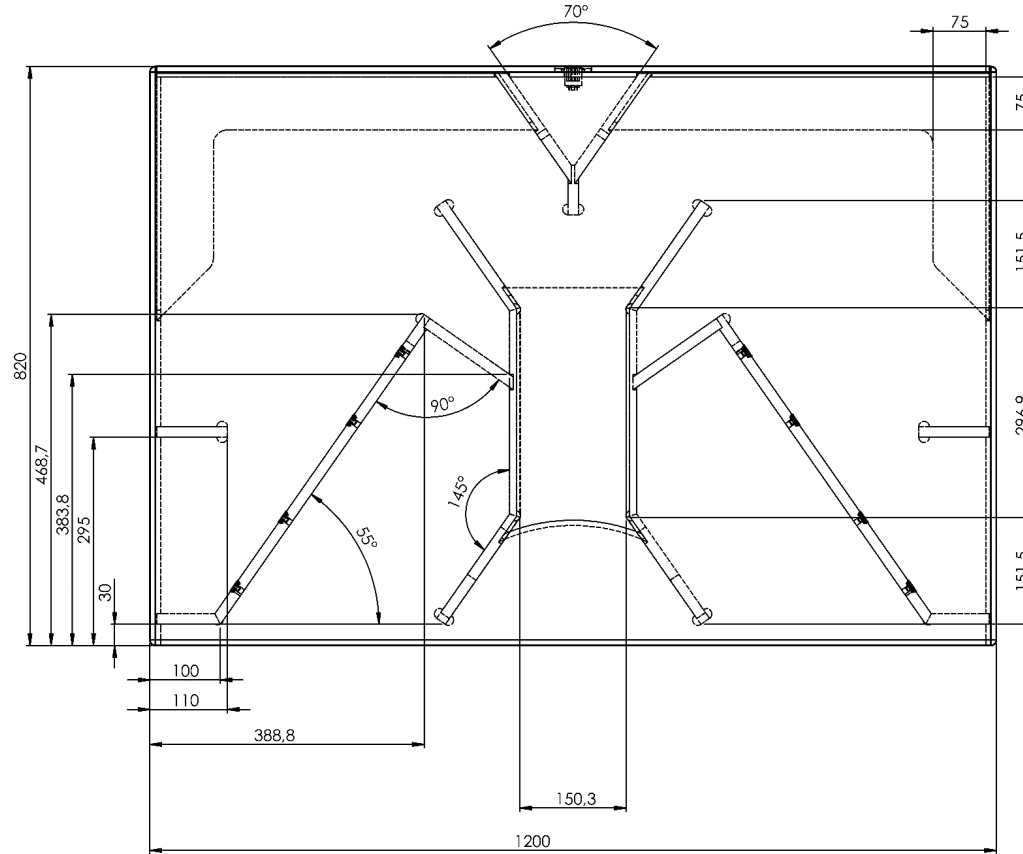


Material: 15mm birch plywood



# S218 NTLW | DIMENSIONS

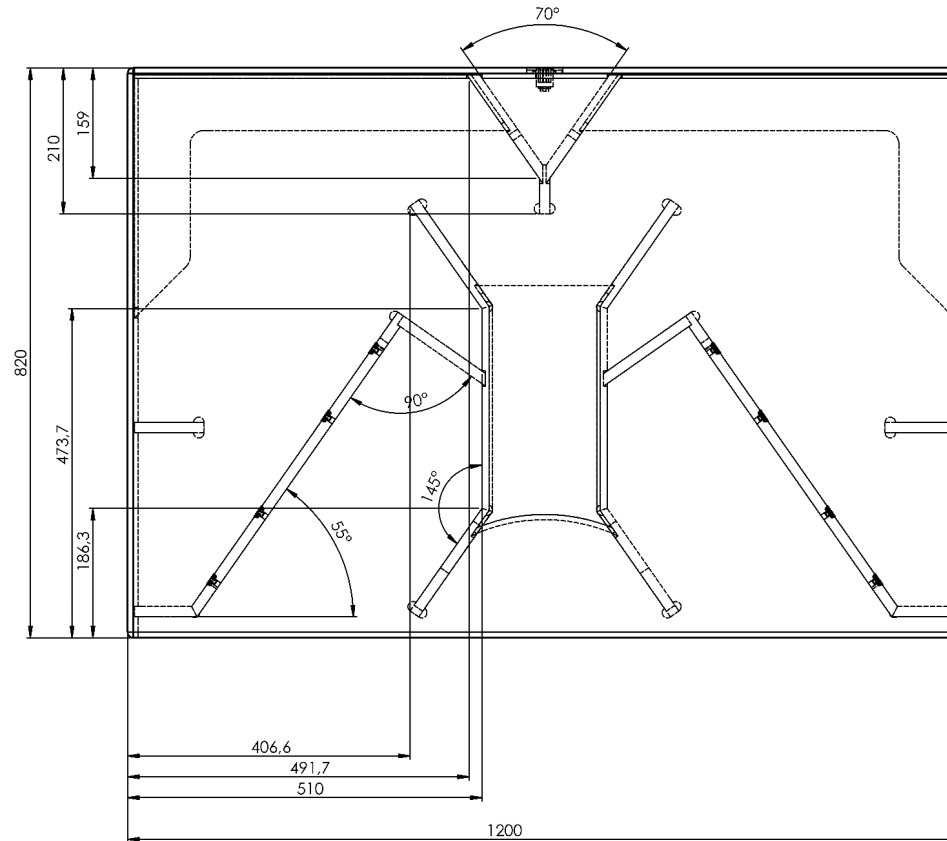
Top View





# S218 NTLW | DIMENSIONS

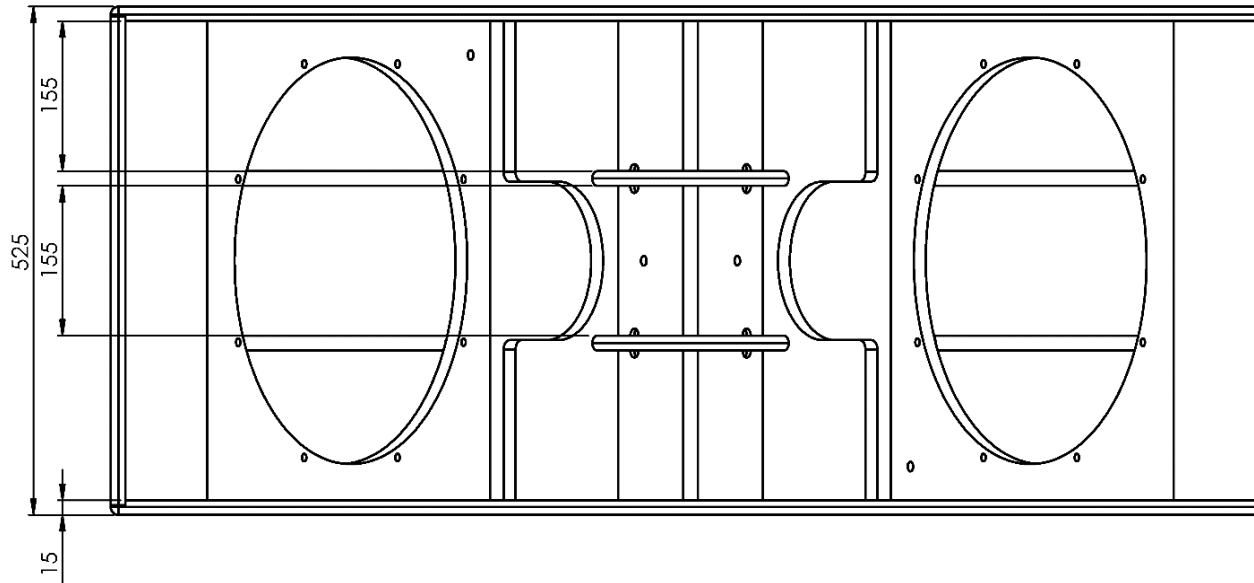
Top View





# S218 NTLW | DIMENSIONS

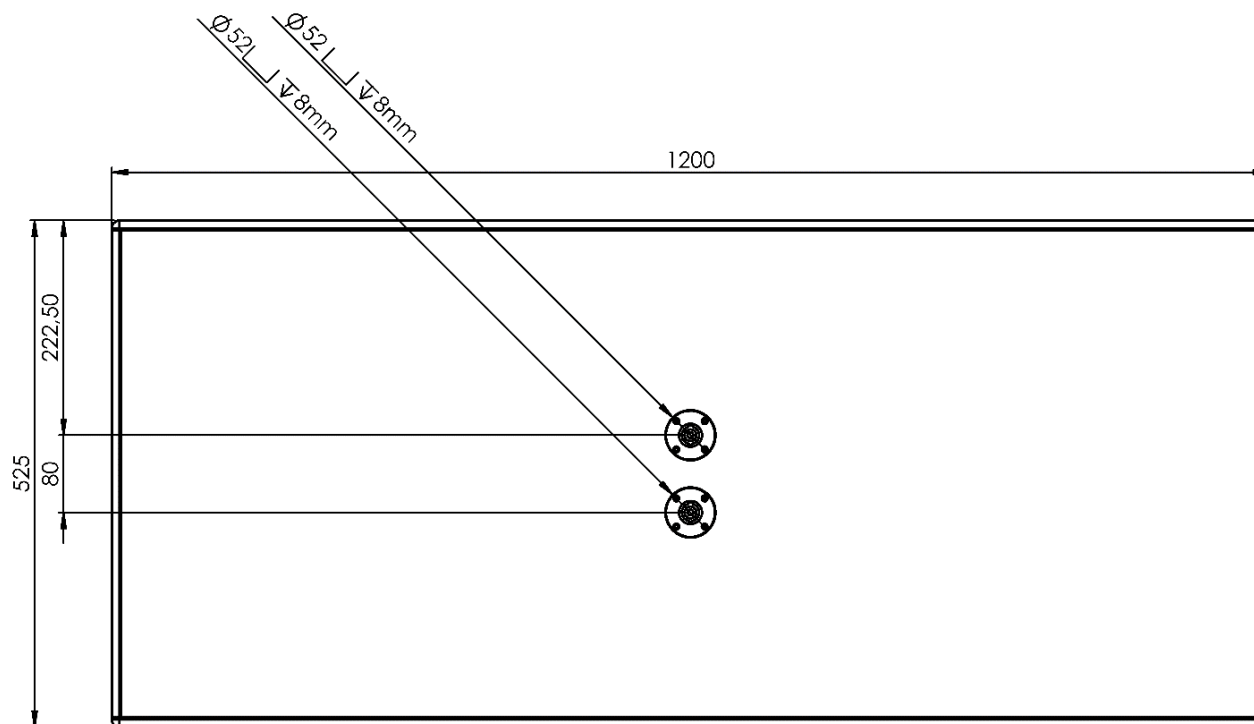
Front View





# S218 NTLW | DIMENSIONS

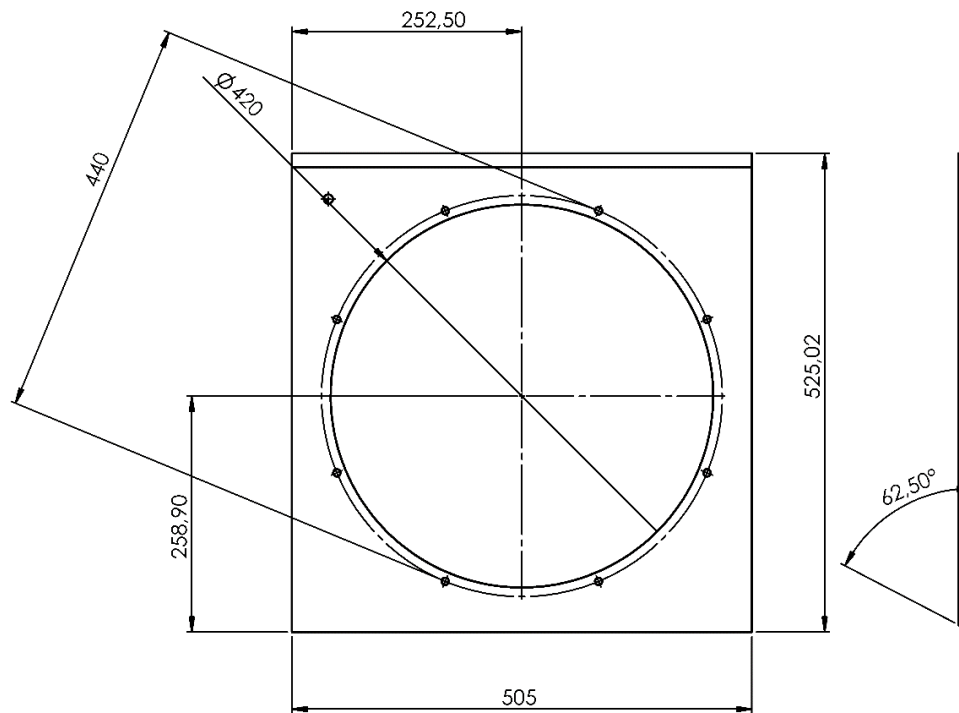
Back View





# S218 NTLW | DIMENSIONS

Baffle

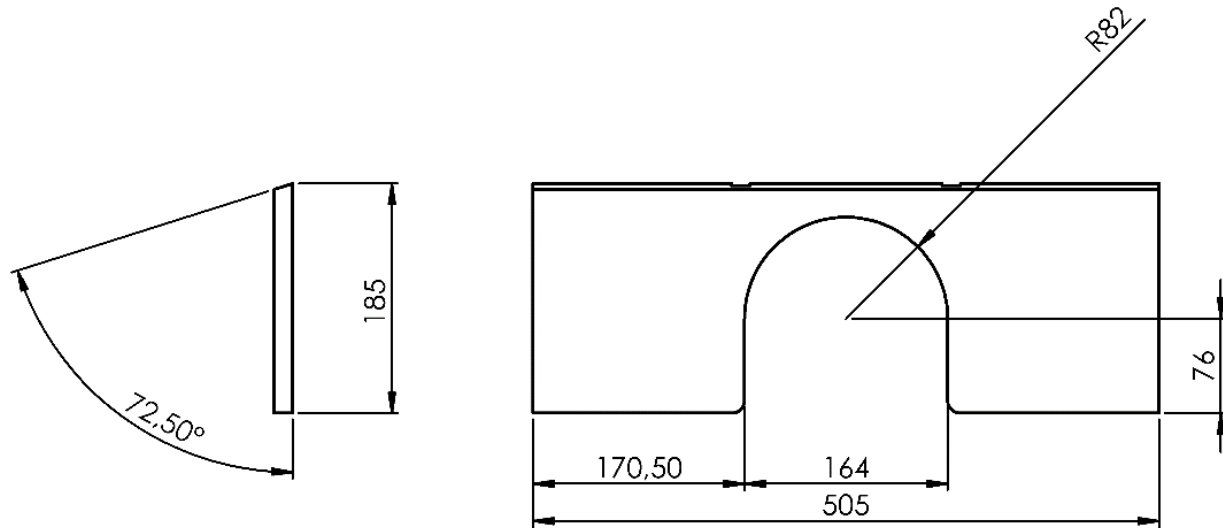


*Woofer hole position is MANDATORY*



# S218 NTLW | DIMENSIONS

Reflex



*Central round opening is MANDATORY*





# **S218 NTLW** | NOTES